



# 2021 Philanthropy Report

Our promise...

That every child  
born today will see  
and hear throughout  
their lifetime.

Dear Friends,

We are very happy to share with you our annual Philanthropy Report—a celebration of Mass Eye and Ear’s life-saving and life-changing work, made possible by your generosity.

In 2021, your gifts helped us raise \$22 million to promote exceptional patient care, groundbreaking research, world-class training for future leaders in our specialties, and service to our community. In a year full of challenges, you made us stronger through your philanthropy, kindness, and commitment to our mission.

In the following pages, we invite you to read about the many ways you enabled Mass Eye and Ear to thrive in the 2021 fiscal year. Thanks to you, we are closer to cures for blindness, deafness, and diseases of the head and neck, and building a healthier future for people here and everywhere.

We hope you share our pride in all we have accomplished and the vital role that you—our generous and loyal friends—have played in making it possible. On behalf of all of us at Mass Eye and Ear and the countless patients who have and will continue to benefit from your support, thank you.

Sincerely,



A handwritten signature in black ink, appearing to read "Robert Atchinson".

**Robert Atchinson**  
*Chairman of the Board*



A handwritten signature in black ink, appearing to read "John Fernandez".

**John Fernandez**  
*President*

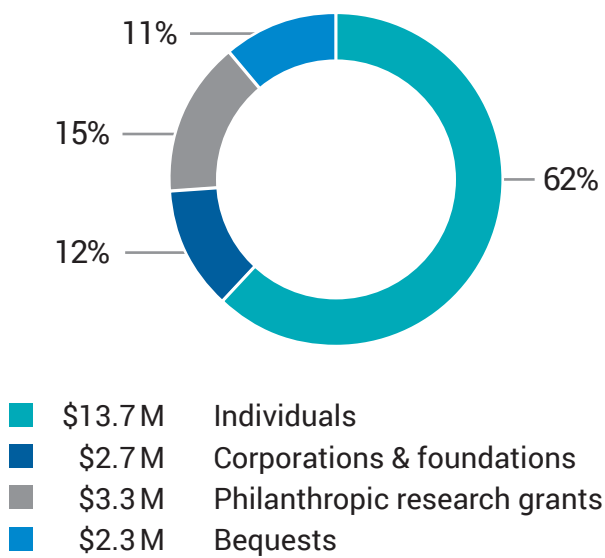




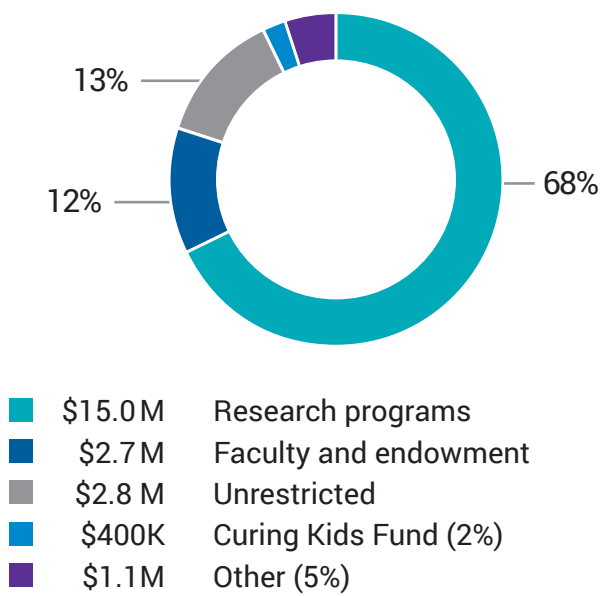


# \$22M fiscal year giving summary

## Who is investing?



## Where are they investing?



\$2.7M  
**People**



\$16.5M  
**Program**



\$2.8M  
**Place**

# FY21 leadership gifts

In fiscal year 2021, Mass Eye and Ear received \$22 million in gifts, grants and pledges from generous friends, private foundations and corporations. These donations, received from October 1, 2020 to September 30, 2021, are an investment in exceptional patient care, life-changing research and world-class training for the next generation of leading physicians and scientists.

---

**\$2,050,000** from Michelle and Bob Atchinson for an endowed chair in the Mike Toth Head and Neck Cancer Research Center and support of the Sense-ation! Gala

---

**\$2,000,000** from Diana and Douglas Berthiaume to support research in the Berthiaume Family Surgical Photonics & Engineering Laboratory

---

**\$1,000,000** from Elizabeth and Michael Ruane to establish the Ruane – Randolph Thyroid Fund to support research and teaching led by Dr. Gregory Randolph

---

---

**\$1,000,000** from Deborah and Steven Barnes for hearing research led by Dr. Albert Edge

---

**\$1,000,000** from the Bill and Melinda Gates Foundation for AAV vaccine platform research led by Dr. Luk Vandenberghe

---

**\$1,000,000** from The Bertram and Althea Lank Family to help renovate the Glaucoma Service and name the Lank Family Glaucoma Reception

---

**\$1,000,000** from Fredrick and Ines E. Yeatts for age-related macular degeneration research led by Drs. Demetrios Vavvas and Joan W. Miller and hearing research led by Dr. Zheng-Yi Chen

---

---

**\$920,000** from Open Philanthropy for pulmonary fibrosis research led by Dr. Leo Kim

---

**\$571,630** from Research to Prevent Blindness for vision research led by Drs. Lucia Sobrin, Mengyu Wang and Daniel Sun

---

**\$562,500** from the Edward N. and Della L. Thome Memorial Foundation for research led by Dr. David Wu

---

**\$500,706** from the Estate of Mildred Smith Molter for age-related macular degeneration research and unrestricted hospital support

---



---

**\$380,937** from the Estate of Joseph Massik for unrestricted hospital support

---

**\$305,000** from David Vargo and Sheila Collins for AAV vaccine platform research led by Dr. Luk Vandenberghe, cornea research led by Drs. Reza Dana and Ula Jurkunas, the Child Life Program and unrestricted hospital support

---

**\$250,686** from the Hal MacKenzie Freeman Revocable Trust for the Freeman Operating Lounge Endowment Fund

---

**\$250,000** from Fast Grants, part of Emergent Ventures of the Mercatus Center at George Mason University for AAV vaccine platform research led by Dr. Luk Vandenberghe

---

---

**\$250,000** from Pat and Barry Yellen for the Patricia and Barry Yellen Young Investigators Award in hearing

---

**\$210,000** from the Massachusetts Lions Eye Research Fund for vision research

---

**\$200,000** from an Anonymous Donor for glaucoma research led by Dr. Teresa Chen

---

**\$200,000** from the Alcon Foundation to launch a pilot program to improve access to ophthalmic care for underserved patients in the Boston area led by Dr. Alice Lorch

---

**\$200,000** from Digital Federal Credit Union to launch a pilot program to improve access to ophthalmic care for underserved patients in the Boston area led by Dr. Alice Lorch

---



"We are deeply grateful to Philip and Marjorie Gerdine for their generous support of the Department of Ophthalmology. Their partnership has made a marked impact on what we are able to accomplish and will improve the lives of countless people faced with vision loss and blindness, now and for generations to come."

Joan W. Miller, MD, Chief of Ophthalmology



## Philip and Marjorie Gerdine

# Life-changing care inspires legacy giving

As a young student in Dallas, Texas, Philip Gerdine had trouble seeing the chalkboard in class. The school nurse told him he had bad vision and that not much could be done. Throughout college, he continued to struggle with his vision and started to accept that poor eyesight may be his reality. Years later, however, Philip discovered his “bad vision” had a name—Fuchs endothelial corneal dystrophy, an inherited condition that causes a slow breakdown of the eye cells needed for vision.

Like Phil, his wife Marjorie experienced vision challenges. Two successful, career-driven individuals—Philip, an international business consultant, and Marjorie, a clinical child psychologist—needed quality treatment to continue living their lives to the fullest.

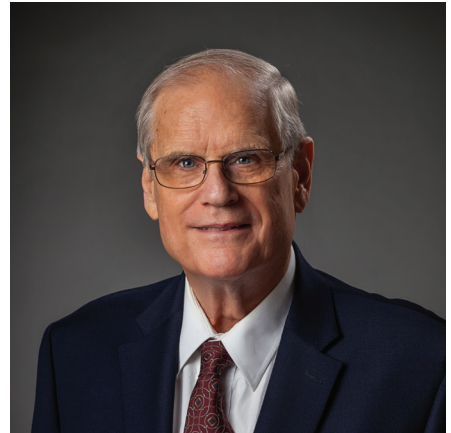


Photo: Philip Gerdine

Seeking the very best care, Philip and Marjorie were referred to Mass Eye and Ear, where they eventually met with Joan W. Miller, MD, Chief of Ophthalmology at Mass Eye and Ear. Dr. Miller diagnosed Marjorie with age-related macular degeneration (AMD), a vision impairment resulting from deterioration of the central part of the retina. When Phil asked to transfer his cornea care to Mass Eye and Ear, Dr. Miller recommended he see Ula Jurkunas, MD, an expert in Fuchs dystrophy, to help treat his condition.

In honor of the life-changing care they received, Philip and Marjorie became committed donors to Mass Eye and Ear, endowing the Marjorie and Philip Gerdine Fellowship in Ophthalmology to support the training of clinical retina fellows. Later, with his interest in Fuchs, Philip got to know and support Dr. Jurkunas and her program.

Philip also made a very generous planned gift to establish the Philip V. and Marjorie W. Gerdine Chair in Ophthalmology. This endowed position will support the research, patient care, and teaching activities of a senior clinician-scientist in the cornea specialty, and will live on in perpetuity at Mass Eye and Ear.





"It has been an honor and a privilege to participate in the care of so many wonderful patients. Their kindnesses and generosity through the years have been inspirational. I am truly blessed to have found my vocation and passion in medicine."

Jessica Fewkes, MD



## Jessica Fewkes Center in Dermatology and Facial Plastic Fund

# Patients honor Dr. Jessica Fewkes with a lasting legacy

For Jessica Fewkes, MD, helping patients successfully overcome skin cancer has long been her passion. Unrivalled for her contributions to advancing skin cancer treatments, Dr. Fewkes is an internationally recognized leader in Mohs surgery and was the first Mohs surgeon in the Department of Dermatology at Harvard Medical School. She joined Mass Eye and Ear as Director of Mohs and Cutaneous Surgery in 1998.

Over a medical career spanning more than 40 years, Dr. Fewkes has cared for thousands of patients faced with skin cancer, the most common being basal cell carcinoma and squamous cell carcinoma. In performing Mohs surgery, she removes only a small amount of skin at a time that is examined under the microscope. If cancer cells are found, more skin is taken, until she no longer sees cancer cells. Using this technique, Dr. Fewkes is able to cure her patients while preserving as much healthy skin as possible, resulting in the best possible cosmetic and functional outcomes.

In addition to her impeccable reputation as a dermatologic surgeon, Dr. Fewkes is beloved by her patients for the care and compassion she shows them. When speaking with patients about Dr. Fewkes, similar sentiments are repeated. “I was a wreck before my surgery, but as soon as I saw Dr. Fewkes with her low-key and calming personality, I was immediately put to ease,” describes one patient. “She has a way of treating people like family. It’s a very special quality,” said another.

Through research and teaching, Dr. Fewkes has improved the standard of care for patients with skin cancer throughout the world. She has dedicated herself to leadership roles aimed at advancing Mohs surgery as a treatment for skin cancer and has recruited other talented physicians to the profession, which has in turn led to improved patient outcomes.

In 2021, thanks to the generosity of a number of patients, the Jessica Fewkes Center in Dermatology and Facial Plastic Fund was endowed in perpetuity at Mass Eye and Ear. This fund celebrates Dr. Fewkes’ lifelong dedication to her patients and the treatment and prevention of skin cancer worldwide.



“The Scovilles’ generosity is a game-changer for our gene therapy research. We are on the threshold of discoveries that will improve the diagnosis and treatment of inherited forms of blindness and their generous gift will get us there faster.”

Eric Pierce, MD, PhD  
Director, Ocular Genomics Institute





## Jim and Kay Scoville

# Bequest drives life-changing eye research

When planning their estate, Jim and Kay Scoville wanted to give others what Jim had wished for his whole life: the gift of sight.

Early life was not easy for Jim. One of five siblings, William James “Jim” Scoville was born prematurely on September 6, 1929 in Hartford, CT, along with his twin brother and life-long best friend, Homer. Jim suffered from retinopathy of prematurity, a condition that causes abnormal blood vessel growth in the light-sensitive part of the eyes in premature infants. Sadly, this condition rendered Jim legally blind as a young man.

Jim’s family hoped to find a cure. His sister routinely took him to eye specialists in New York to seek answers, without success. Jim attended school and worked in warehouses, but he fell victim to bullying from coworkers and eventually stopped working.

At age 40, life took a turn when he married Katherine “Kay” Spirou, a high school French teacher. They spent the next 40 years happily together, always staying close to their families. Jim was an expert water skier and adored his dogs, Jet and Frosty. Fiercely independent and self-sufficient, Jim amazingly lived alone for 10 years after Kay’s death. In his later years, family members and neighbors visited often, and Jim loved sharing lunch and a beer while sitting on the beach.

Early on, Jim purchased a small amount of McDonald’s stock and Kay later purchased Apple stock. Their simple lifestyle, successful investments, and desire to help others evolved into an extraordinary gift to Mass Eye and Ear that will help to give the gift of sight to others as they had hoped.

In honor of Jim and Kay, the William James Scoville and Katherine Spirou Scoville Genomics Center has been proudly named within the Ocular Genomics Institute. The Scoville Center applies the latest gene sequencing technologies to uncover newly discovered genetic causes of blindness, which will undoubtedly lead to better vision for many children and adults.



Photo: Jim and Kay Scoville





“We are deeply appreciative of the philanthropy that made this pilot possible. There has been a disparity in our healthcare system for too long, excluding a fair opportunity to underserved communities to receive quality treatment, specifically in ophthalmology. We are grateful to be a part of this change.”

Alice Lorch, MD, MPH

Associate Chief for Quality, Department of Ophthalmology

## The Alcon Foundation and Digital Federal Credit Union

# Joining forces to combat health disparities

As the pandemic surged throughout the United States, the longstanding gap in healthcare based on race and socioeconomic factors intensified. Even before Covid-19, Mass Eye and Ear ophthalmologists witnessed this disparity as patients in underprivileged communities with unstable insurance were more likely to defer care, leading to extreme outcomes like permanent vision loss.

“We saw an opportunity to make a difference,” said Alice Lorch, MD, MPH, ophthalmologist and Associate Chief for Quality in the Department of Ophthalmology. “We devised a pilot program to improve access to ophthalmic care, beginning in the Chelsea and Revere communities for in-person and telemedicine visits. Generous support from The Alcon Foundation and Digital Federal Credit Union (DCU) made it possible.”

For The Alcon Foundation, the opportunity to partner with Mass Eye and Ear was an ideal fit with their mission to support programs that improve patient access to quality eye care services. Likewise, DCU, a leading credit union in Massachusetts with a deep commitment to the community recognized the chance to make an impact and enthusiastically joined in.

Dr. Lorch and her co-clinical leader, Grayson Armstrong, MD, MPH, were also awarded a grant from the Mass General Brigham United Against Racism Initiative, a program that seeks to eliminate the impact of racism on patients and employees within the Mass General Brigham system.

Thanks to these generous grants, the program launched in 2021 and is providing screening and treating patients with diabetic retinopathy, a complication of diabetes where blood vessels in the eye are damaged. The goal is to ensure patients with diabetic retinopathy in low-income neighborhoods receive the care they need to avoid further vision loss.

The program aims to expand beyond diabetic retinopathy to provide a comprehensive suite of ophthalmic care and improve access to care across Massachusetts communities in greatest need.

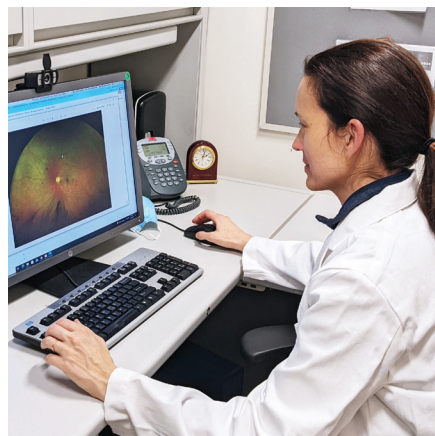


Photo: Alice Lorch, MD, MPH





"I am deeply grateful to Anna and Neil Rasmussen. Together, we will improve the standard of care for patients with CRS and other nasal inflammatory diseases. Their partnership is essential to our progress and I can't thank them enough."

Benjamin Bleier, MD, FACS



## Anna and Neil Rasmussen

# A passion for innovation fuels bold new research

Anna and Neil Rasmussen believe in the power of innovation to solve the toughest medical problems. Chronic rhinosinusitis (CRS), a rare, currently incurable inflammatory disease of the sinuses is one such challenge the Rasmussens have taken on as enthusiastic champions.

In 2015, Anna and Neil met Benjamin Bleier, MD, FACS, a clinician-investigator in the Mass Eye and Ear Sinus Center and a leading expert in the study and treatment of CRS. “We were immediately impressed by Dr. Bleier’s novel approaches to research aimed at developing less invasive and more effective therapies for CRS,” said Anna. “He is an extraordinarily skilled and compassionate clinician and a truly visionary researcher. The prospect of partnering with him was an inspiration and an honor.”



Photo: Benjamin Bleier, MD, FACS

Unlike acute rhinosinusitis, which is a temporary infection of the sinuses that often occurs after colds, CRS is a persistent problem that causes symptoms such as nasal congestion, post-nasal drip, facial pain, and reduced sense of smell. With CRS, symptoms last for twelve weeks or more and can significantly reduce quality of life.

For Dr. Bleier, caring for CRS patients in the Sinus Center is a constant reminder of the urgent need for better treatments. With this explicit goal, his laboratory studies the role of the body’s immune system in triggering inflammation of the nasal passages in CRS and has identified biological indicators of disease as potential targets for new treatment. He is currently screening candidate drugs in his lab to test their ability to treat and reverse inflammation caused by CRS, and hopes to begin testing the most promising of these drugs in animal models soon. Ultimately, he aims to develop multiple treatment approaches that can be evaluated in human trials.

Anna and Neil are invaluable partners in Dr. Bleier’s quest, making multiple generous gifts to expedite his research. There is no doubt their tremendous investment in his laboratory has and will continue to make a transformational impact—ultimately, bettering the lives of many thousands of patients.

# Event recaps

## Sense-ation! Gala

On October 28, Mass Eye and Ear aired an exceptional program, Medical Mysteries, Sensational Results. It was a gala like no other! The 30-minute program led guests on an exciting journey to unravel amazing medical mysteries and enjoy an inside view into what's next in cutting-edge research. You won't want to miss this inspiring and fun show. Tune in anytime at: [masseyeandear.org/events/sense-ation](http://masseyeandear.org/events/sense-ation).

## Team Eye and Ear

Team Eye and Ear had another successful year! On October 11, 39 team members ran the Boston Marathon® and, on August 15, another 20 members ran the ASICS Falmouth Road Race. Together, the team raised an impressive \$477,000 to advance patient care and research at Mass Eye and Ear. Since 2006, Team Eye and Ear has raised \$7 million to support the hospital's mission.





## Inaugural Mass Eye and Ear Invitational

On June 21, President John Fernandez hosted 64 golfers at the Inaugural Mass Eye and Ear Invitational at the Weston Golf Club. It was a great day of fun had by all that also provided support for Mass Eye and Ear's life-changing mission.



## Founders' Day

On May 17, Mass Eye and Ear hosted its annual Founders' Day celebration with a virtual program: Science, Courage & Hope: Doctors and Patient Partner to Make Gene Editing a Reality. The highlight of the event was a talk by Michael Kalberer, the second person in the world to experience CRISPR gene editing as a potential treatment for blindness. Michael shared his personal and moving experience as a participant in a trial led by Dr. Eric Pierce, Director of the Ocular Genomics Institute at Mass Eye and Ear.

## Spring Lecture

Mass Eye and Ear held a virtual spring lecture featuring Drs. Kevin Emerick, Bruce Ksander and Meredith Gregory-Ksander. Approximately 100 friends of Mass Eye and Ear from all over the country tuned in to hear presentations on the latest breakthroughs in cutaneous skin cancer and eye research. Special thanks to Claire and John Bertucci, Diane and Al Kaneb, Helene and Tom Lauer, and Daniel and Kathy Mezzalingua for hosting this event.



# Benefactors

## The Reynolds Society

Named in honor of Edward Reynolds, MD (1793–1881), co-founder of Mass Eye and Ear, the Reynolds Society was established in 1986 to recognize special friends who make annual gifts, grants and pledges of \$2,500 and more during the fiscal year (October 1 through September 30) to Mass Eye and Ear or Schepens Eye Research Institute.

**We are pleased to recognize and thank the following Reynolds Society members for their generosity in fiscal year 2021 (October 1, 2020–September 30, 2021):**

### \$1,000,000 and more

Anonymous  
Michelle and Bob Atchinson  
Deborah and Steven Barnes  
Diana and Douglas Berthiaume  
Bill and Melinda Gates Foundation  
Frederick A. Jakobiec, MD, DSc \*  
The Bertram and Althea Lank Family  
Elizabeth and Michael Ruane  
Fredrick and Ines E. Yeatts

### \$500,000–\$999,999

Claire and John Bertucci  
DeBlois Trust\*\*  
Open Philanthropy  
Estate of Mildred Smith Molter  
Research to Prevent Blindness  
Edward N. and Della L. Thome Memorial Foundation

### \$100,000–\$499,999

Anonymous (4)  
Alcon Foundation, Inc.  
American Academy of Otolaryngology  
Aufmuth Family Foundation / Jeanne and Lawrence Aufmuth  
The Bergstein Family  
Sheldon and Dorothea Buckler  
Estate of Richard A. Campana  
Julia and Mark Casady and the One Step Forward Education Foundation  
Herb Chambers  
Estate of Ellen Joan Cotter  
Diane T. Coulopoulos, PhD

Digital Federal Credit Union  
Elias T. Dikmak  
Mr. and Mrs. Willis H. du Pont  
Dr. Jessica L. Fewkes and Mr. Rene Mugnier  
Dr. C. Stephen and Mrs. Frances Foster  
Grimshaw-Gudewicz Charitable Foundation  
Hill Family Charitable Foundation  
Brian and Mary Jo Hogan  
The Emily C. Hood Living Trust  
Diane E. and Albert J. Kaneb  
Knights Templar Eye Foundation, Inc.  
Helene and Tom Lauer  
Dr. and Mrs. Martin H. Loeffler / MSL Renewed Hope Foundation  
Hal MacKenzie Freeman Revocable Trust  
Massachusetts Lions Eye Research Fund  
Estate of Joseph Massik  
The Mercatus Center at George Mason University  
George and Annmarie Migausky  
David and Sharon Neskey  
Oberkotter Foundation  
Michel and Ellen Plantevin  
Keith and Roberta Richardson  
Thomas F. and Diana L. Ryan  
Bruce and Barbara Sawyer  
Stuart and Suzanne Steele  
Troy Stevens  
David Vargo and Sheila Collins  
Edward and Judi Zuker

### \$50,000–\$99,999

Anonymous (2)  
Alcon  
American College of Surgeons  
Katrine S. Bosley  
The Butler Foundation  
CorneaGen, Inc.  
Francois and Rosamond Delori  
St. Vincent De Paul Foundation  
Anne and Chad Gifford  
Glaucoma Research Foundation  
Charles E.W. Grinnell Fund  
Giving | Grousbeck Fazzalari  
President and Fellows of Harvard College - Harvard Medical School  
Louis and Jennifer Hernandez  
Lyle Howland and Jack Manning  
John and Kathy Kavanagh  
Robert # and Kristin Knapp  
Jill and Ed Kutchin  
H. Joseph Leitch  
Cathie and Woody Mann  
Mr. and Mrs. Eugene M. McQuade  
William F. Milton Fund  
Roberta A. Pierce Family Trust / Eric M. Pierce and Douglas H. Pierce  
Ragon Institute of MGH, MIT, and Harvard  
Suzanne Harte Sears and Francis Sears / Edwin S. Webster Foundation  
Eileen and John Sivoilella  
Chris Snook and Susan Stoddart  
Jennifer and Jonathan Uhrig  
Usher Syndrome Society  
Janey L. Wiggs, MD, PhD and Robert J. D'Amato, MD, PhD



## \$25,000–\$49,999

Anonymous (2)  
 Richard and Nichole Aldrich  
 Alport Syndrome Foundation  
 American Society of Head and Neck  
 Radiology, Inc.  
 Carol and Howard Anderson  
 Samuel and Nancy Jo Altschuler  
 Estate of Bernard H. Baher  
 Attorney and Mrs. Efthymios J. Bentas  
 Ali C. Butcher #  
 Dr. and Mrs. Jeffrey P. Buzen  
 Estate of Barbara F. Csavinszky  
 H. E. Cushing and Cathy Lurie  
 Paul and Sandy Edgerley  
 Eversight  
 Nancy P. Ferguson  
 Frequency Therapeutics, Inc.  
 Michael and Melissa Gallagher  
 Harold Grinspoon and Diane Troderman  
 Estate of Paula Joan Harris  
 International Thyroid Oncology Group  
 Johnstone Ocular Research Trust  
 The Karp Family Foundation  
 Toni and Robert Kenyon  
 Mr. and Mrs. James M. Lober  
 The Robert R. Mohr Family  
 Mr. and Mrs. David P. Norton  
 Carol Sawyer Parks  
 The Benjamin Harry Peikin Foundation  
 G. Gorham Peters Testamentary Trust  
 Rodney and Patrice Pratt  
 Michael J. Price, MD, FRCSC

Sally Ankeny Reiley #  
 Leon V. Rosenberg  
 Michael P. Rubin, MD #  
 Michael & Helen Schaffer Foundation, Inc. /  
 Wendy A. Appel  
 Ashley and Robert Scott /  
 Lenoir Charitable Trust  
 Ashley C. Smith #  
 Anne and Charles E. Vadakin  
 John H. and Emma P. Van Gorden Trust  
 The Vecellio Family Foundation /  
 Kathryn and Leo Vecellio, Jr.  
 Henry N. and Whiteley B. Wheeler  
 Sheryl W. Winslow 2015 Charitable Lead  
 Trust  
 Frances S. Yu

## \$10,000–\$24,999

Anonymous (4)  
 Tony and Mary Adamis  
 Brandon Aebersold  
 Dr. Sharman Altshuler and  
 Mr. David Altshuler  
 American Speech-Language-Hearing  
 Foundation  
 Mr. and Mrs. DeWalt Ankeny, Jr.\*  
 Rebecca A. Aten #  
 Jordan Barletta #  
 Wesley D. Barnard #  
 Marie T. Bauer  
 Elizabeth H. Bauman and Luke Gullick  
 Robert P. Bauman  
 Barbara Beckman-Beard  
 Mr. and Mrs. Gary Bennett

Robert Bishop  
 Drs. Mark S. Borchert and  
 Karen A. Sherwood  
 Georgette and Sol Boucai  
 Mr. and Mrs. Donald L. Boudreau  
 Lawrence L. Cameron  
 Bill Casey #  
 Children's Hospital Ophthalmology  
 Foundation  
 Mr. and Mrs. Jeffrey A. Choney  
 Estate of Rose M. Ciccolo  
 C.J.L. Charitable Foundation  
 Arthur D. Clarke and Susan Sloan  
 Margaret Cobb #  
 Michael S. Cohen, MD and Megan S. Cohen  
 Mr. and Mrs. Richard F. Connolly, Jr.  
 John M. Corboy, MD  
 Andrew M. Corry #  
 James and Shirley Curvey  
 Frederick V. Davis  
 Gina M. Demoulas #  
 Maura A. Desmarais #  
 Kurt L. Devay #  
 DM Foundation  
 Patrick A. Dunigan  
 Debra A. Durgin #  
 David and Betsy Epstein  
 Mr. and Mrs. Robert S. Epstein  
 Estate of Donald J. Evans  
 Mike Feblowitz #  
 John and Vance Fernandez  
 Mr. and Mrs. Steven Field  
 Fight for Sight, Inc.  
 Fish & Richardson



**"When I think of miracles, I think of Mass Eye and Ear. As the world's best, they tackle the toughest, most challenging eye, ear and throat issues. They see the problem, solve it and make life better. As I listen to their patients' stories, I can't help but ask myself, 'How is that even possible?'"**

**Carol Parks**

**LOYAL FRIEND, 22 YEARS**



**“Being insiders has afforded us an intimate view of the Mass Eye and Ear mission in action. Knowing the people and witnessing first-hand their dedication to the highest quality care and research is inspiring to us. We are invested and give knowing that our gift will make a difference in the lives of others.”**

**Leo Kim, MD, PhD and Nahyoung Grace Lee, MD**

**LOYAL FRIENDS, 10 YEARS**

Estate of John Paul Franks  
Harvey and Brenda Freishtat  
Estate of William B. and Florence G.  
Gaedeke  
Beryl David and Harry N. Gorin Foundation  
/ Marjorie L. Gorin  
Jack V. Greiner, OD, DO, PhD  
Harvard University  
John W. Henry Family Foundation  
Paul # and Danika Herrick  
David G. Hunter, MD, PhD and  
Constance E. West, MD  
John E. and Sue M. Jackson Charitable  
Trust  
Norman and Lela Beren Jacoby Foundation  
JGA Foundation  
Mr. and Mrs. Kenneth Joblon  
Jessica Karis #  
KBT Charitable Foundation  
Timothy P. Kelly #  
William H. Kieffer III and James May  
Brian W. King #  
Estate of Frances Bartlett Kinne  
Norman Knight  
Mr. and Mrs. Warren D. Knowlton  
Katharine A. Kormushoff #  
Jonathan W. Kutchins  
Mr. and Mrs. Robert C. Lamb, Jr.  
Michaela Letendre #  
Mr. and Mrs. Matthew S. Levin  
Betty L. Li  
Haiming Li  
Dr. and Mrs. Graham P. Lidgard

Lions VisionGift  
Susan M. and Matthew S. Lorber  
Sarah J. Lorber  
Nalini A. Madiwale, MD  
Douglas and Kathy Mancosh  
Mr. and Mrs. Joseph M. Mandato  
B. L. Manger Foundation, Inc. /  
Renee H. Manger  
Mr. and Mrs. Martin J. Mannion  
The Nancy Lurie Marks Family Foundation  
Estate of David B. Maxwell  
Kristen Miguel #  
Drs. John H. Niffenegger and  
Arysol S. Niffenegger  
Joseph J. O'Brien #  
Mr. and Mrs. Yoshio Ohno  
Abbey A. Page #  
Alexandra Paterson #  
Donald and Sandra J. Perrin  
Physicians Realty Trust  
Mr. and Mrs. Ronald Picerne  
Olgert Prendo #  
Dr. Gregory W. and Lorraine M. Randolph  
Kelly and Tuck Rickards  
The Ryan Foundation  
Gina M. Savastano #  
David and Marie Louise\* Scudder  
Neal and Deborah Shalom  
Oscar T. Slotterbeck #  
James H. Somers #  
Rand K. Spero and Barbara A. Hall  
Elise Stockly  
Elinor Svenson

Mary Swaim  
The Swartz Shalom Charitable Foundation  
/ Matthew Swartz  
Polly Townsend\*  
Mr. and Mrs. Stephen\* G. Traynor  
Tsoi/Kobus & Associates, Inc. /  
Richard L. Kobus  
Nicholas J. Volpe, MD and  
Francesca Mattone-Volpe, MD  
Estate of Theodore N. Voss  
Marissa L. Votruba #  
Monte J. Wallace and Anne H. Wallace  
Eric A. Welsh  
Mr. and Mrs. Patrick J. Welsh  
Mr. and Mrs. Harold D. Winters  
Mr. and Mrs. Jeffrey C. Wolk  
Mr. and Mrs. Irwin Wood

### **\$2,500–\$9,999**

Anonymous (3)  
The Abelson Family  
Mr. and Mrs. David C. Abrams  
Mr. Christopher M. Adams  
Mr. and Mrs. Jason N. Ader  
Advanced Bionics Corporation  
Dr. J. Mark Albertson  
ARVO Foundation for Eye Research  
Atrius Health  
Drs. Nathalie and Dimitri Azar  
Ann M. Bajart, MD, FACS  
Mr. Mel A. Barkan  
Mr. and Mrs. William C. Barrett  
Christopher Barry #



Lucille Batal and Avi Nelson  
 Mr. and Mrs. Chad T. Battaglia  
 Mr. and Mrs. John W. Beer  
 Margaret Smith Bell  
 Dr. and Mrs. Barry J. Benjamin  
 Roger and Lynne Berkowitz and  
 George\* and Harriet Berkowitz  
 Mr. and Mrs. Channing L. Bete, Jr.  
 Neil Bhattacharyya, MD  
 Sheila Borboli-Gerogiannis, MD  
 Boston Children's Hospital  
 Donna Boule #  
 Robert B. Brigham Trust  
 Edgar H. Bristol  
 Judith L. Brodtkin  
 Brodware Design LLC  
 Sally A. Callahan  
 Christen L. Caloway, MD  
 John and Rita Cannistraro  
 Michael P. Cannistraro #  
 Mr. and Mrs. Michael H. Cardozo  
 John and Kelly Carroll  
 Lucy Lindeman Carty  
 Judith L. Caruso  
 Century Bank  
 Dean M. Cestari, MD  
 Marion Chesley Trust  
 Nipun Chhabra, MD  
 Matt Ciociolo  
 David R. Clancey and Joanne E. Gay  
 Mr. and Mrs. Steven C. Clark  
 Mr. and Mrs. Christopher M. Coburn  
 Maureen L. Coello #  
 Mr. and Mrs. Gerard H. Cohen  
 Catherine A. Colaianni #  
 Edward M. Colbert  
 Wayne M. Comfort  
 Cummings Properties, LLC  
 Dr. Reza and Mrs. Azhand Dana  
 Miss Flora E. D'Angio  
 Nelson J. Darling, Jr.  
 Mr. and Mrs. Gary Darman  
 Claudia L. Davidoff and Joseph Kahan  
 Alan and Karen Dawes  
 Angela and John DesPrez III  
 Mr. and Mrs. Bryon G. Deysher  
 Mr. and Mrs. Charles J. Dockendorff  
 Konstantinos Douglas #  
 Jennifer Durost #  
 Mr. and Mrs. Alan J. Dworsky  
 Mr. and Mrs. Charles J. Evan  
 Eye Bank Association of America

Mr. and Mrs. Andrew T. Fay  
 Judith Feldman  
 Dimitra Filippou  
 Mr. and Mrs. Kenneth M. Fischer  
 Mr. and Mrs. John F. Franciosa  
 Mr. and Mrs. Steven B. French  
 Gamers Outreach Foundation, Inc.  
 Matthew F. Gardiner, MD and Mary  
 Elizabeth Cunnane, MD  
 C. Stewart Gentsch  
 Philip V. Gerdine, PhD  
 Mr. and Mrs. Charles D. Gerlinger  
 Michael S. Gilmore, PhD  
 Robert L. Gise, MD  
 Dr. and Mrs. John W. Gittinger  
 Dr. and Mrs. Richard E. Gliklich  
 Mr. and Mrs. Andrew I. Glincher  
 Mr. and Mrs. Robert M. Goeken  
 Dr. and Mrs. E. Gragoudas  
 Granite Telecommunications  
 Perrin and Bruns Grayson  
 Cynthia L. Grosskreutz, MD, PhD and  
 Bradley T. Hyman, MD, PhD  
 Grant and Lara Talbot Gund  
 Mr. and Mrs. Martin M. Hale  
 Steven R. Hamilton, MD  
 Wade W. Han, MD  
 Mr. and Mrs. Mark P. Harmon  
 Krista Harrington #  
 Amanda S. Harrison #  
 Kevin Harron and Kimberly Brown  
 Mr. and Mrs. Neal J. Harte  
 Robert W. Hartnett  
 David Healy, MD  
 Mr. and Mrs. William J. Heater  
 Robert G. Hendrie  
 Earl & Shirley Herbst Eye Research Fund at  
 CT Community Foundation  
 Robert F. Higgins and Kristine Moyer  
 Roz and Herb Hill  
 Dr. and Mrs.\* Ralph H. Hinckley  
 Rocken Hong  
 Horvath & Tremblay  
 Rob and Carol Ann Hunter  
 Arthur J. Hutchins  
 Mr. and Mrs. John K.F. Irving  
 Isgenuity, LLC  
 Melinda S. Jerauld  
 Phillip and Susan Johnson  
 Johnson & Johnson  
 Alison S. Jordan  
 Bob and Letitia Jordan

Mr. and Mrs. Steven M. Kaplan  
 Marion A. Kaufmann  
 Estate of Joyce Ann Kelly  
 Jonathan M. Keyes  
 Leo A. Kim, MD, PhD and  
 Nahyoung Grace Lee, MD  
 Rosa Kim and Linus Ho  
 Emma Klug #  
 Russell Lamon Irrevocable Trust  
 Patrick C. Langmaid #  
 Deborah P. Langston, MD, FACS  
 Drs. John B. and Marissa A. Lazor  
 Carol A. Lebow  
 Miss Wallace M. Leonard Foundation  
 Elizabeth A. Levin  
 Edwin H. Lewis  
 Kasey K. Li, MD, DDS  
 Hsiao Liang and Jung K. Liang  
 John & Sonia Lingos Family Foundation /  
 George N. Papaliodis, MD and  
 Sofia S. Lingos-Papaliodis  
 Mr. and Mrs. Michael E. Liu  
 Louise and John Loewenstein, MD  
 Lon C. Loken  
 Eileen O. Lowell, RN  
 Jonathan and Rose Luchette  
 Zhonghui Katie Luo, MD, PhD  
 Erin D. Lynch #  
 Mr. and Mrs. J. Peter Lyons  
 James M. and Carolyn L. MacDonald  
 Wayne D. Mackie  
 Robert and Deborah MacPherson  
 Mr. and Mrs. Chip Mainelli  
 Mr. and Mrs. Hugo R. Mainelli, Jr.  
 Rebecca A. Maki #  
 Leila Mankarious, MD and Jamie Rome  
 Michael F. Marmor, MD  
 Attorney and Mrs. Louis J. Maret  
 David and Terry Marotta  
 Mary T. Marshall  
 McCall & Almy, Inc.  
 Carol Gray McCarthy  
 Paul J. McCarthy  
 Estate of Margaret D. McCormick  
 Kathryn McIver  
 John D. McPeake and Barbara Duckett  
 Colin L. McShane #  
 Medtronic, Inc.  
 Dr. and Mrs. Ralph Metson  
 Mr. and Mrs. Daniel N. Mezzalingua  
 Miss Zareen Taj Mirza  
 Kerry A. Momnie #







Mr. and Mrs. Gerard M. Moufflet  
 Shizuo Mukai, MD  
 Mr. and Mrs. David W. Murray  
 Suzanne and Terrence Murray  
 David E. Nash, MD  
 Mr. and Mrs. Stuart G. Newman  
 Mr. and Mrs. Kenneth W. Nill  
 Anne S. Noble #  
 Northpond Ventures LLC  
 Karen L. O'Connor, PhD  
 Todd O'Connor #  
 Robert O'Donoghue  
 Mr. and Mrs. Stephen J. O'Neill  
 Emily Orschein #  
 H. Gregory Ota, MD  
 Margaret Paul #  
 Melissa M. Paul and  
 Pieter Muntendam, MD  
 Dr. and Mrs. Edward M. Peres  
 Perkins School for the Blind  
 Eric A. Pierce, MD, PhD  
 Kelly Pigott #  
 Mr. and Mrs. Robert M. Pineau  
 Steven Pletcher, MD  
 Dr. William M. Porteous and  
 Ms. Elizabeth Weber  
 Mr. and Mrs. Robert A. Power  
 Lt. Col. Thomas Przybelski  
 Maj. and Mrs. Richard C. Puccio, Jr.  
 Robert E. Puopolo  
 Pure Storage, Inc.  
 Dr. and Mrs. Vito C. Quatela  
 George\* and Patsy Rabstejnek  
 Mr. and Mrs. William Regan  
 Michael B. Rho, MD  
 Mr. and Mrs. Mark V. Rickabaugh  
 Louise C. Riemer  
 Joseph F. Rizzo, MD  
 Mr. Philip W. Roizin  
 William Edward Roman  
 Mr. and Mrs. Michael J. Rotondi  
 Jacqueline M. Royce  
 Joseph R. and Joanne Salois  
 Dr. Laura and Mr. Alexander Saltonstall  
 Mark V. Sapp  
 Mr. and Mrs. Gregory Sargent  
 Dr. Suzanne Smith Saulniers  
 Yolanda and John Scaramuzzo  
 Emily F. Schabacker  
 Michael J. Schelzi  
 Mrs. Carol R. Scheman and Dr. David Korn  
 Mark E. Schreiber

Marcia E. Schwartz  
 Mr. and Mrs. Robert C. Seamans III  
 M. Kathleen Seiders  
 Mr. and Mrs. Joseph Shaker  
 Dr. and Mrs. Douglas R. Shaller  
 L. Dennis\* and Susan R. Shapiro  
 John Powley and Sarah A. Sharpe  
 Mr. and Mrs. George H. Shattuck, Jr.  
 Roberta A. Sheehan, PhD  
 Shepherd Hill Regional High School  
 Mr. and Mrs. Malcolm L. Sherman  
 Jeff and Lynn Shoreman  
 Mr. and Mrs. Stanley J. Sidel  
 Eric A. Sieck, MD  
 Gordon Silver  
 Raj Sindwani, MD  
 Dr. and Mrs. Philip M. Skidd  
 Dr. and Mrs. William B. Smith  
 Harry D. Snyder, MD  
 Dr. and Mrs. William E. Snyder, Jr.  
 Zachary M. Soler, MD  
 Sandra C. Steele and Paul S. Greenfield, MD  
 Wilma P. Stonestreet and  
 Donald C. McKenne  
 David Storto and Shelley Mogil  
 Alyson R. Strasnick  
 Suffolk Construction Company  
 Bruce A. Swanson  
 Bob and Joan Sweeney  
 Mr. and Mrs. Michael L. Tennican  
 Janet Tiampo and David Parker  
 Jonathan Y. M. Ting, MD  
 Johna Toppa  
 Susan Currie Toth  
 Wendy M. Traynor  
 Eliezer Upfal, PhD  
 Frans Van de Velde, MD, PhD  
 Mark A. Varvares, MD, FACS  
 VitreoRetinal Surgery Foundation  
 Lisa and Neil Wallack  
 Mr. and Mrs. Bradley S. Waterman  
 Susan Wayne  
 David C. Weinstein and Clare Villari  
 James F. Whalen, Jr. and Diane Conley  
 Brianna K. Whelan #  
 Estate of Stetson Whitcher  
 Anthony K. Wong  
 Terence Wong and Amy Sullivan  
 John Wright  
 Robert C. Yardley, Jr.  
 Sara Esm Zad #  
 Mr. and Mrs. Michael J. Zak

B. Andrew Zelermyer and  
 Daniel L. Romanow  
 Nicholas M. Zolotas #  
 Jim and Jan Zucco

## **\$1,000–\$2,499**

Anonymous (6)  
 Blake C. Alkire, MD  
 Donald D. Allen  
 Rosamond W. Allen and Paul E. Landry  
 Mr. and Mrs. Roger W. Altreuter  
 Mr. and Mrs. Allan E. Ames  
 Drs. Christopher Andreoli and Denise Gee  
 Apple Lane Foundation  
 Mr. and Mrs. Samuel S. Arcidy  
 Dr. and Mrs. Ravinder K. Arora  
 Mr. and Mrs. Bruce G. Atwood  
 Hasan M. Bahrani, MD  
 Mark W. Barber  
 Mr. and Mrs. Louis Bedell  
 Edward C. Benner  
 Joseph C. Benoit  
 Nancy J. Berkman  
 Charles K. Beyer-Machule, MD  
 Robert D. Binney and Janet Veasey  
 Dr. and Mrs. Neil R. Blacklow  
 Elaine M. Boc  
 Maria M. Bortkiewicz, MD  
 Alex Boverman  
 Mr. and Mrs. William L. Boyan  
 William G. Broaddus, Jr.  
 Mr. and Mrs. Peter R. Brown  
 Dr. Nicolas BuSaba and Dr. Maha Farhat  
 Adam P. Campbell, MD  
 Robert and Barbara Cancalosi  
 Jim and Karen Canfield  
 Mr. and Mrs. Antonio B. Cardi  
 Carolyn's Transport LLC  
 Kenneth K. Chang, MD  
 Kathleen M. Charbonnier #  
 Mr. and Mrs. Theodore E. Charles  
 Andrew Chesterton and Darina Gilley  
 Chesterton  
 James Chodosh, MD, MPH  
 Thomas G. Chu, MD, PhD  
 Cimarron Realty Trust  
 Alan D. Citron  
 Mr. and Mrs. Fred W. Clough  
 Steven H. Cobb, MD  
 Marsha R. Cohen  
 Colden & Seymour Ear, Nose, Throat &  
 Allergy

Jason I. Comander, MD, PhD  
 Brian Connolly #  
 Sydney Conti  
 Conway Area Lions Club  
 Cook Medical, Inc.  
 James J. Corbett, MD  
 Paul R. Cotran, MD  
 Julian H. Crocker  
 Dr. and Mrs. Hugh D. Curtin  
 Mr. and Mrs. Daniel F. Daley  
 Jeffrey L. Dauphinais  
 Mr. and Mrs. Jonathan G. Davis  
 Mr. and Mrs. Donald A. DeAngelis  
 Mr. and Mrs. Hubert G. DeLacvivier  
 Evelyne L. Delori  
 Lorayne H. Delvecchio  
 John Dempsey and Brigid Tobin  
 Mr. and Mrs. Stephen Dephoure  
 Mr. and Mrs. Peter M. DeWolfe, III  
 Donald R. Dickinson  
 Alice R. Dietrich  
 Marc J. Dinkin, MD  
 Ron N. Dreben and Alison J. Richards  
 Mr. and Mrs. David M. Duchesneau  
 Roger F. Dumas  
 Elizabeth B. Dussan, V  
 Julie A. Dutcher  
 Ruth Anne Eatock, PhD  
 Robert Eaton  
 Dean S. Edmonds III  
 Sarah M. Eisa #  
 Bradley L. Ellis #  
 Mr. and Mrs. Stephen B. Erisman  
 Peter G. Fallon, Jr.  
 Mr. and Mrs. James F. Fasi  
 Dr. James J. Fasy  
 David Federman  
 Bruce A. Feldman, MD  
 Craig Frances  
 Ramon A. Franco, Jr., MD  
 Michael W. Gaynon, MD  
 Rich Godfrey  
 Amy Lindeman Gouger  
 Linda and David Greenseid, MD  
 Dr. and Mrs. Scott H. Greenstein  
 Misa Grikschat  
 Robert A. Gryboski, MD  
 Mr. and Mrs. Ronald J. Halaby  
 Betty Hale  
 Paul E. Hammerschlag, MD, FACS  
 Jeffrey P. Harris, MD, PhD  
 Mr. and Mrs. Peter J. Hart

Mr. and Mrs. Charlie T. Haydock  
 Roberta Ann Heath  
 John J. Henry  
 John G. Higgins  
 Mr. and Mrs. John F. Hilson  
 David M. Hinkle, MD  
 John Holmes III  
 Timothy P. Horne  
 Dorothy J. Horns, MD  
 Deeba Husain, MD  
 Qasim Husain, MD  
 Iron Tree Service, LLC  
 John A. Irvine, MD  
 Cameron G. Javid, MD  
 John F. Jeffrey  
 Katie and Randy Johnson  
 Sylvia S. Johnson  
 Nate Jowett, MD, PhD, FRCSC #  
 Mr. and Mrs. John C. Kane, Jr.  
 Mr. and Mrs. Jeffrey Kaufman  
 Michael J. Kearney  
 Sharon Kedar  
 Mr. and Mrs. Walter A. Kennedy, Jr.  
 Mr. and Mrs. Nathanael G. Kessler  
 Drs. Donald R. Korb and Joan Exford  
 Drs. Ernest W. and Ellen Kornmehl  
 Patricia S. Kreger and  
 Lawrence D. Cohan, MD  
 Magdalena G. Krzystolik, MD  
 Peter R. Laibson, MD and Ruth Laibson  
 Mr. and Mrs. Derek Lam  
 George Lambert III  
 Dr. and Mrs. Mark A. Latina  
 Charles D. Leahy, OD  
 Danielle M. Ledoux, MD  
 Daniel R. Lefebvre, MD  
 Mary and Bob Lentz  
 John and Denise Leonard  
 Man-Kit Leung, MD  
 Mr. and Mrs. Robert Levine  
 Mr. and Mrs. Geoffrey W. Levy  
 Donald P. Lewis, DDS  
 Mr. and Mrs. Richard A. Liddy  
 Giant C. Lin, MD  
 Michael M. Lin, MD  
 Lions Club Fall River, Inc.  
 Dr. John G. Lipchak  
 Jamie R. Litvack, MD  
 Mr. and Mrs. Douglas J. Liu  
 Derek R. Lovley, PhD  
 Catherine Roy Lund  
 Dick and Pat MacKinnon

Mr. and Mrs. Loran B. Macumber  
 Maiuri Electrical Corporation  
 Mr. and Mrs. Eli Manchester  
 Mr. and Mrs. Luke Marchand  
 Dennis M. Marcus, MD  
 Mr. and Mrs. Richard J. Marshuetz  
 Mr. and Mrs. Mark R. Masterson  
 Mr. and Mrs. Frank J. Mastrocola  
 George D. Maydwell  
 Mr. and Mrs. George D. McAvoy  
 William and Carol McClerkin  
 Donald E. McCready  
 Mr. and Mrs. Thomas W. McDonald  
 Ronald E. McFarland, MD  
 Marlyn E. McGrath and Harry R. Lewis  
 Drs. Lynne S. and Cliff A. Megerian  
 Mr. and Mrs. John H. Meyn  
 Michael E. Migliori, MD  
 Joan W. Miller, MD and John B. Miller, PhD  
 Sandra R. Montezuma, MD  
 Doryce M. Moosey  
 James Morello  
 Mr. and Mrs. Frederic H. Morris  
 Irving L. Morris, Jr.  
 Dr. and Mrs. J. Michael Murphy  
 Mr. and Mrs. Brendan Murtaugh  
 Eugene N. Myers, MD  
 Dr. and Mrs. Joseph B. Nadol, Jr.  
 Anthony B. Nesburn, MD  
 David E. Newman-Toker, MD, PhD  
 Sally Anne Nicholas  
 Estate of Katherine Noire  
 Norfolk Lions Club  
 North Shore Bank  
 Dale C. Oates, MD  
 Mr. and Mrs. Joseph L. O'Brien  
 Mr. and Mrs. Herbert W. Oedel  
 Mr. and Mrs. Steven D. Ogden  
 Mr. and Mrs. James P. O'Hare  
 Alan V. Oppenheim, ScD  
 David P. Orecchio  
 Robert Treat Paine Association  
 Michael W. Pennett, MD  
 Victor L. Perez, MD  
 Mr. and Mrs. Richard F. Perkins  
 Delia B. Pooler  
 William J. and Lia G. Poorvu  
 Posnick Family Foundation  
 Drs. Adrian J. Priesol and Nurhan Torun  
 Jayabarathy Rajaiya, PhD  
 Mr. and Mrs. Kenneth M. Ramble  
 Carol and Anthony Rando



Bhupendra Rawal #  
 Dr. and Mrs. Edward J. Reardon  
 Julia M. Reiley #  
 Sandra Reisman  
 Anne M. Remington  
 Lester E. Richardson II, DO, FACEP  
 Jeremy D. Richmon, MD  
 Alberta M. Richmond  
 Henry F. Riemer  
 Joel Ristuccia and Joan Sapir  
 Richard M. Robb, MD  
 Christine M. Roberge  
 Miin Roh, MD, PhD, MSc  
 Carol A. Rouleau  
 Mark F. Rounds, MD  
 Judith K. Rushmore  
 Anthony H. Russell, MD  
 Felix N. Sabates, Sr., MD  
 Jose-Alain Sahel, MD  
 Felipe Santos, MD  
 George A. Scangas, MD  
 Augustin P. Schepens  
 Ronald and Judy Schlossberg  
 Robert W. Scholle  
 Mr. and Mrs. William Schwab  
 Ahmad R. Sedaghat, MD, PhD, FACS  
 Herbert Silverstein, MD, FACS  
 Dr. Janet Sisterson  
 Mr. and Mrs. Victor M. Skalubinski  
 Mr. and Mrs. Gregory V. Stento  
 Mary A. Stepp, PhD  
 Mr. and Mrs. Campbell Steward  
 Thomas E. Stone  
 Mr. and Mrs. Joseph E. Stoy

Jennifer L. Street and Kyle P. Erlandsen  
 Mr. and Mrs. Roger W. Sullivan  
 Mr. David Swift and Dr. Martha Swift  
 Mr. and Mrs. Michael D. Tannenbaum  
 Theodoros N. Teknos, MD  
 Daniel J. Townsend, MD  
 Kelly Rae and Robert Travaglini  
 Kazuo Tsubota, MD  
 Julie Tuite #  
 Demetrios Vavvas, MD, PhD  
 Mr. and Mrs. David M. Walker  
 Mr. and Mrs. Michael S. Walsh  
 Evelyn V. Walton  
 Judith E. A. Warner, MD  
 Mr. and Mrs. Stanford Warshawsky  
 Mr. and Mrs. James B. Wayman, Jr.  
 Mr. and Mrs. Alexander R. Webb III  
 Raymond Wee, MD  
 Nancy Canter Weiner, MD and  
 Mark J. Weiner, MD  
 Mr. and Mrs. James O. Welch, Jr.  
 Pamela Welch  
 Elaine N. Wilford  
 Kelly Rae and Robert Travaglini  
 Kelly M. Williamson #  
 Stuart R. Winthrop, MD  
 Natalie Wolkow, MD, PhD  
 Leslie Wong  
 Mr. and Mrs. James H. Wyner  
 Tsunehiro Yasuda, MD  
 Michael K. Yoon, MD #  
 Lauren M. Zirilli



**“Our family is proud to play a part in supporting  
 Mass Eye and Ear’s efforts to provide life-changing  
 treatments in hearing, vision, and head and neck  
 cancers. The hospital’s talented and dedicated teams  
 bring so much hope to so many people.”**

**Ed and Jill Kutchin**

**LOYAL FRIENDS, 12 YEARS**

## Planned gifts

Mass Eye and Ear and Schepens Eye Research Institute recognize and thank the following friends whose generous support of our mission will continue beyond their lifetimes through bequests and planned gifts. During the fiscal year of October 1, 2020 through September 30, 2021, the following estate gifts were realized upon the donor's passing. We are grateful for their enduring friendship and legacy.

### Gifts of \$1,000,000 and more

Estate of Frederick A. Jakobiec

### Gifts of \$500,000–\$999,999

Estate of Mildred Smith Molter

### Gifts of \$100,000–\$499,999

Estate of Richard A. Campana

Estate of Ellen Joan Cotter

Estate of Hal MacKenzie Freeman

Estate of Emily C. Hood

Estate of Joseph Massik

### Gifts of \$10,000–\$99,999

Estate of Bernard H. Baher

Estate of Marie T. Bauer

Estate of Rose M. Ciccolo

Estate of Barbara F. Csavinszky

Estate of Donald J. Evans

Estate of John Paul Franks

Estate of Paula Joan Harris

Johnstone Ocular Research Trust

Estate of Frances Bartlett Kinne

Estate of David B. Maxwell

John H. and Emma P. Van Gorden Trust

Estate of Theodore N. Voss

### Gifts of \$1,000–\$9,999

Robert B. Brigham Trust

Marion Chesley Trust

Edith C. Crocker Charitable Trust

Estate of Joyce Ann Kelly

Russell Lamon Irrevocable Trust

Estate of Margaret D. McCormick

Estate of Katherine Noire







## Gifts in kind

Each year, in addition to outright and planned gifts, Mass Eye and Ear and Schepens Eye Research Institute are the grateful recipients of valuable tangible items such as medical equipment, academic texts, event tickets and more. These items are deeply appreciated and may be used by our patients or hospital staff, as appropriate, or may be auctioned off at a hospital event to raise funds for our mission. We are pleased to recognize and thank the following friends for their generous “in kind” gifts made between October 1, 2020 and September 30, 2021.

Mr. and Mrs. Robert Cancalosi  
Gamers Outreach Foundation  
Mending Crooked Smiles Fund  
Ariella M. Rosengard  
Shelley A. Weiss





## The 1824 Circle

Unrestricted giving affords Mass Eye and Ear and Schepens Eye Research Institute the flexibility to embrace new opportunities and address immediate priorities. To encourage unrestricted philanthropy at the leadership level, The 1824 Circle was established as a special recognition group within The Reynolds Society. Membership is reserved for friends who make unrestricted gifts of \$12,500 or more during the fiscal year. Mass Eye and Ear thanks the following 1824 Circle members for their gifts made between October 1, 2020 and September 30, 2021.

Anonymous (2)

Richard and Nichole Aldrich

Samuel and Nancy Jo Altschuler

Mr. and Mrs. DeWalt Ankeny, Jr.\*

Estate of Bernard H. Baher

Marie T. Bauer

Attorney and Mrs. Efthemios J. Bentas

Mr. and Mrs. Donald L. Boudreau

Dr. and Mrs. Jeffrey P. Buzen

Estate of Richard A. Campana

Herb Chambers

Estate of Rose M. Ciccolo

Estate of Barbara F. Csavinszky

Frederick V. Davis

Mr. and Mrs. Willis H. du Pont

Estate of William B. and Florence G. Gaedeke

Estate of Paula Joan Harris

The Emily C. Hood Living Trust

Lyle Howland and Jack Manning

JGA Foundation

John and Kathy Kavanagh

Estate of Frances Bartlett Kinne

Norman Knight

Dr. and Mrs. Graham P. Lidgard

Sarah J. Lorber

Susan M. and Matthew S. Lorber

Estate of Joseph Massik

David B. Maxwell Charitable Fund

Mr. and Mrs. Eugene M. McQuade

Estate of Mildred Smith Molter

Mary L. Norton

Carol Sawyer Parks

G. Gorham Peters Testamentary Trust

Rodney and Patrice Pratt

Kelly and Tuck Rickards

Ashley and Robert Scott / Lenoir Charitable Trust

David and Marie Louise\* Scudder

Jennifer and Jonathan Uhrig

Anne and Charles E. Vadakin

John H. and Emma P. Van Gorden Trust

David Vargo and Sheila Collins

Henry N. and Whiteley B. Wheeler



**"I have had the good fortune of being a hearing scientist at many high-profile institutions—and now Mass Eye and Ear, which is second to none. I am proud to be doing the best work of my career and happy to pay it forward in many small ways."**

**Sunil Puria, PhD**

**LOYAL FRIEND, 6 YEARS**



(Photo taken prior to the pandemic)



## Annie Sullivan Society

The Annie Sullivan Society honors and recognizes the following thoughtful and generous individuals who have named Mass Eye and Ear in their wills, planned gifts or estate plans.

Anonymous (20)  
Peter and Widgie Aldrich  
Richard and Nichole Aldrich  
Samual and Nancy Jo Altschuler  
Bernard H. Baher  
Barbara W. Barker  
Attorney and Mrs. Efthemios J. Bentas  
John J. Bentz  
George\* and Harriet Berkowitz  
Martin S. Berman and Mary Ann Jasienowski  
Alexander Bernhard and Myra Mayman  
Sheldon and Dorothea Buckler  
Francis R. Carroll  
Karen K. Chandor  
Winifred Wilson Day  
Paul J. Donahue  
Mr. and Mrs. James E. Drew  
Thomas M. Drusa  
John and Susan Edwards  
Richard P. Floyd, MD  
Drs. Philip V. Gerdine, and Marjorie\* W. Gerdine  
Robert L. Gise, MD  
William and Malora Gundy  
Joseph W. and Anna\* P. Haley  
Steven R. Hamilton, MD  
Sandra C. Heath  
Dr. and Mrs. Richard H. Holley  
Lyle Howland  
Elizabeth A. Irvin, PhD  
Audrey and Dean Irwin in memory of Will Irwin  
Letitia and Bob Jordan  
Bruce Jordan  
Vicki and Stephen Kahn  
Diane E. and Albert J. Kaneb  
Nancy F. Karis  
Kirsten P. Karis  
Mary E. Kearney  
Jonathan and Judy\* Keyes  
Janet M. King  
Aman Kumar  
Jeffrey C. Lamkin, MD  
Shaun and Kathleen Levesque  
Patricia and Richard MacKinnon  
Gregory Maguire  
Anne and Eli Manchester  
Mary T. Marshall

Mark M. Maurer  
William and Carol McClerkin  
John D. McPeake and Barbara Duckett  
Alice R. McPherson, MD  
Rosemarie Meuse in memory of Philip C. Meuse  
Joe Morgan  
Suzanne and Terrence Murray  
Dorothy A. Palenius  
Melissa M. Paul  
Herb\* and Sandy Pollack  
Mr. and Mrs. Robert L. Quindley  
George\* and Patsy K. Rabstajnek  
Phyllis G. Redstone  
Joseph F. Rizzo, MD  
John J. Sabbagh  
Roger A. Saunders  
Barry Scheur  
David W. Scudder  
Peter H. and Frances L. Seidenberg  
Malcom L. Sherman  
Roberta W. Siegel  
Gordon H. Silver  
Herbert Silverstein, MD, FACS  
Janet C. Smith  
Susan Stoddart  
Joseph William Snow  
Roberta Solomon  
M. Paul Stachura  
Mr. and Mrs.\* Lawrence T. Sullivan  
Anthony Theille  
Gerard B. Townsend, Jr.  
Janice Mae Viele  
Linda A. Welter  
James E. Wiggins  
Elaine N. Wilford  
Joy H. Winer  
Mr. and Mrs. Louis T. Winslow  
Pat and Barry Yellen  
Constance V.R. White  
Ruth M. Wolf  
Madelon H. Zimmer

## The William Wolff Society

The William Wolff Society was established to recognize donors during their lifetimes for gifts made to the Schepens Eye Research Institute through their estates or other planned giving vehicles. The society was founded in memory of Mr. William Wolff, a former Schepens Corporator, devoted supporter and advocate of planned giving.

Anonymous (2)  
Mr. and Mrs. Gerald C. Ades  
Betsy J. Anderson  
Larry Connary  
Fermin Delaparra  
Marilyn Desenberg  
Frances D. Duffy  
Susan A. Ennis  
Nicholas P. Garofolo  
Mary M. Gaylord  
Charles C. Gibbons  
Mrs. Frank Gray  
Gwain W. Griffin  
Frederick W. Henry  
John V. Jansonius and Imelda C. Fresquez  
Ruth Kleindienst

Dallas and Nancy Lincoln  
Shelley Lochhead  
Patricia M. Patricelli  
Mr. and Mrs. Charles R. Putney  
Judith Rush  
Audrey J. Scotti  
Florence E. See  
Margaret Stone  
Marjorie Thackwray  
Michael S. Tringa  
William E. Wall  
Jay H. Walton, Jr.  
Mrs. Jerre C. Warren  
Constance V.R. White  
Ruth Mathis Wolf  
Madelon Zimmer



**“As a family with a child with Usher syndrome, we are committed to supporting Mass Eye and Ear’s life-changing mission. We are inspired by the dedication of Dr. Eric Pierce and his team and truly believe that Mass Eye and Ear is the place where cures for blindness will be found.”**

**Brad and Julie Ellis**

**LOYAL FRIENDS, 6 YEARS**











# Trustees

as of 1/9/22

David J. Vargo, Chair  
 Stuart B. Abelson  
 Mark B. Abelson, MD  
 William F. Aikman  
 Richard H. Aldrich  
 Nancy Jo Altschuler  
 Samuel Altschuler  
 Carol F. Anderson  
 Sally Ankeny Reiley  
 Mel A. Barkan  
 Lucille M. Batal  
 Bruce A. Beal  
 Vivian C. Beard  
 Lily H. Bentas  
 Alexander A. Bernhard  
 John R. Bertucci  
 Richard W. Blackburn  
 Georgette Boucai  
 Solomon Boucai  
 Robert N. Boucai  
 Patricia H. Brandes  
 Judith A. Brodtkin  
 Sheldon A. Buckler, PhD  
 Shawn Burke, PhD  
 Kennett F. Burnes  
 James C. Carlisle  
 Francis R. Carroll  
 Richard J. Chaffin  
 Karen K. Chandor  
 Yumin Choi  
 Cheryl L. Clarkson  
 Jason I. Cohen  
 Kenneth J. Conway  
 Ann Marie Cotton  
 Charles E. Curtis  
 William H. Darling, CPA  
 Francois C. Delori, PhD  
 John D. DesPrez III  
 Claes H. Dohlman, MD, PhD  
 Paul J. Donahue  
 John E. Dowling, PhD  
 Michael A. Ervolini

Roger C. Faxon  
 Kenneth M. Fischer  
 Richard I. Freedman  
 Harvey W. Freishtat  
 David L. Frishberg, Esq.  
 Nicholas P. Garofolo  
 Paul E. George  
 Philip V. Gerdine, PhD  
 James F. Gerrity III  
 Richard Godfrey  
 Michael A. Greeley  
 Catherine Grein  
 Wycliffe K. Grousbeck  
 Grant A. Gund  
 Joseph W. Haley  
 Suzanne Harte Sears  
 Carol L. Horvitz  
 Peter Hovland, MD, PhD  
 Robert C. Jordan, Jr.  
 Yu Sing Jung  
 John C. Kane, Jr.  
 Andrea Kaneb  
 John E. Kavanagh, III  
 Mary E. Kearney  
 Nathanael G. Kessler  
 Jonathan M. Keyes  
 Carmella Kletjian  
 Richard L. Kobus  
 Donald R. Korb, OD  
 Tyler J. Korff  
 Patricia S. Kreger  
 Edward D. Kutchin, Esq.  
 Jonathan W. Kutchins  
 Renée M. Landers  
 Deborah Pavan Langston,  
 MD, FACS  
 William G. Lavelle, MD  
 Shaun R. Levesque  
 Matthew S. Lorber  
 Peter S. Lynch  
 Kay G. Lyons  
 Wayne D. Mackie, CPA

Richard A. MacKinnon  
 Renee H. Manger  
 John H. Marengi  
 Attorney Louis J. Marett  
 David P. Marotta  
 Mary T. Marshall  
 Victoria D. McCullough  
 Marlyn E. McGrath, PhD  
 J. Wallace McMeel, MD  
 Alice R. McPherson, MD  
 George Migauskys  
 Joseph A. Milano  
 Gerard M. Moufflet  
 Suzanne Murray  
 Joseph B. Nadol, Jr., MD  
 Ruth Z. Nadol  
 David A. Neskey  
 Christopher E. Nolin  
 Annette J. Nova  
 Karen L. O'Connor, PhD  
 John D. Palmer  
 Carol Sawyer Parks  
 Donald M. Perrin  
 Marguerite A. Piret  
 Michel G. Planetvin  
 Daniel J. Quirk  
 Phyllis G. Redstone  
 Tuck Rickards  
 Joseph F. Rizzo, III, MD  
 Janine T. Rodrigues-Saldanha, MD  
 William E. Roman  
 Kenneth R. Rossano  
 Laura Saltonstall, MD  
 Carol R. Scheman  
 Augustin P. Schepens  
 Robert G. Scott  
 David W. Scudder  
 George H. Shattuck, Jr.  
 Malcolm L. Sherman  
 Roberta W. Siegel  
 Gordon H. Silver  
 Richard J. Simmons, MD

William Bridges Smith, PhD  
 Christian B. Snook  
 Rand K. Spero  
 Sherman H. Starr  
 Sandra C. Steele  
 Ann M. Stockbridge  
 Robert D. Sweeney  
 Robert E. Travaglini  
 Jennifer Uhrig  
 Frans J. Van de Velde, MD, PhD  
 Kathryn G. Vecellio  
 Leo A. Vecellio, Jr.  
 Monte J. Wallace  
 David C. Weinstein  
 Eric A. Welsh  
 Glenn L. Wing, MD  
 John D. Wise  
 Terence Wong  
 Marian Woolston-Catlin, MD  
 Ines E. Yeatts  
 Fredrick S. Yeatts, PhD  
 Barry B. Yellen  
 Janet Zwanziger  
 Ron Zwanziger

# Board of directors

Robert G. Atchinson, Chair  
Joan Alfond  
Minnie Baylor Henry  
Katrine S. Bosley  
Charles de Gunzburg  
John R. Fernandez  
Eugene D. Hill III  
Lyle Howland  
Diane E. Kaneb  
Robert C. Knapp  
Thomas H. Lauer  
Keith D. Lillemoe, MD  
Joan W. Miller, MD  
Rodney C. Pratt  
Thomas Sequist, MD, MPH  
Eileen H. Sivoilella  
Jonathan M. Uhrig  
Mark A. Varvares, MD, FACS













243 Charles Street, Boston, MA 02114  
617 573 3345 | [development@meei.harvard.edu](mailto:development@meei.harvard.edu)  
[masseyeandear.org](http://masseyeandear.org)

Ranked a top hospital in the nation  
by *U.S. News & World Report*

-  [twitter.com/masseyeandear](https://twitter.com/masseyeandear)
-  [facebook.com/masseyeandear](https://facebook.com/masseyeandear)
-  [youtube.com/masseyeandear](https://youtube.com/masseyeandear)
-  [linkedin.com/company/massachusetts-eye-and-ear](https://linkedin.com/company/massachusetts-eye-and-ear)
-  [instagram.com/masseyeandear](https://instagram.com/masseyeandear)
-  [focus.masseyeandear.org](https://focus.masseyeandear.org)