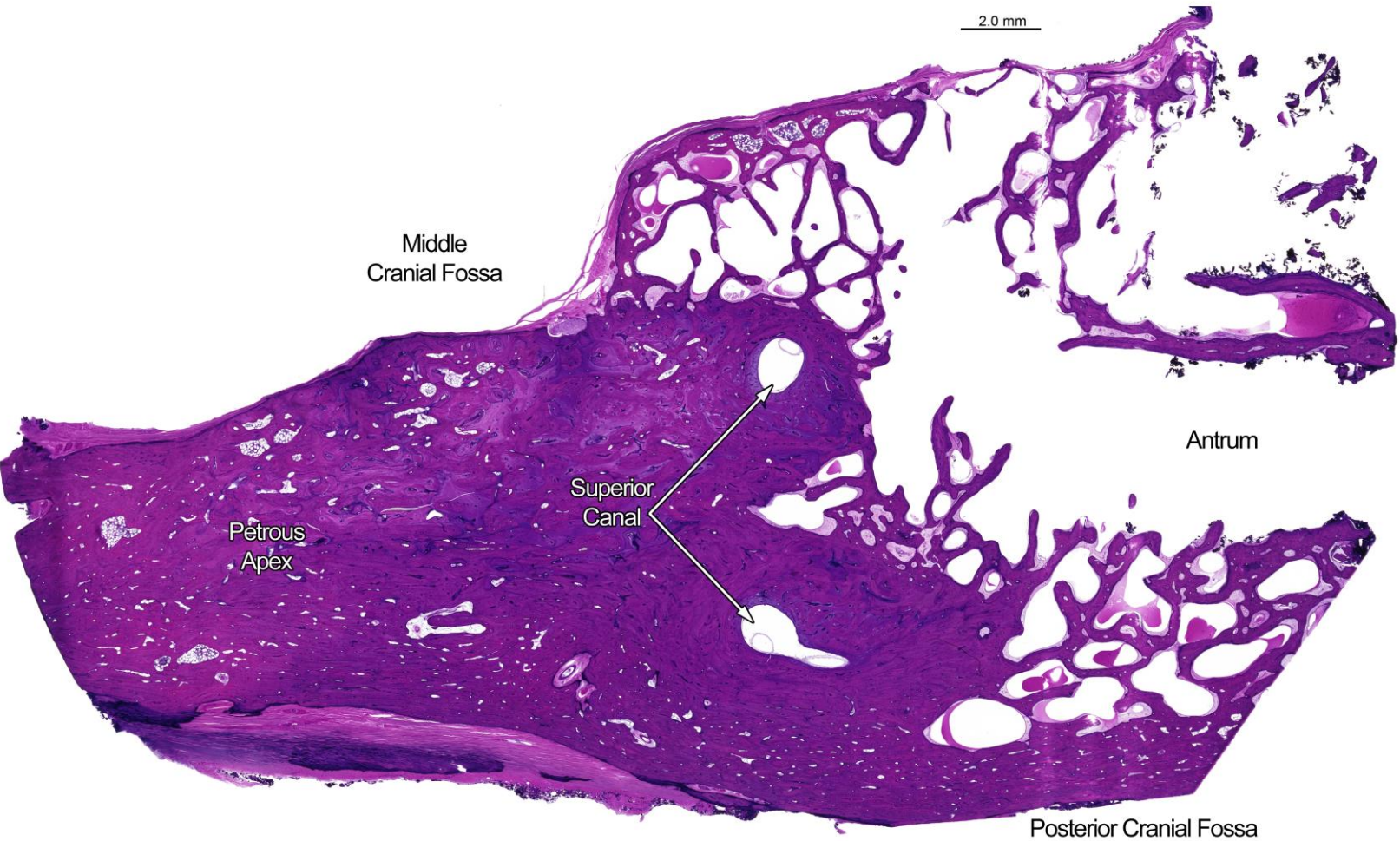
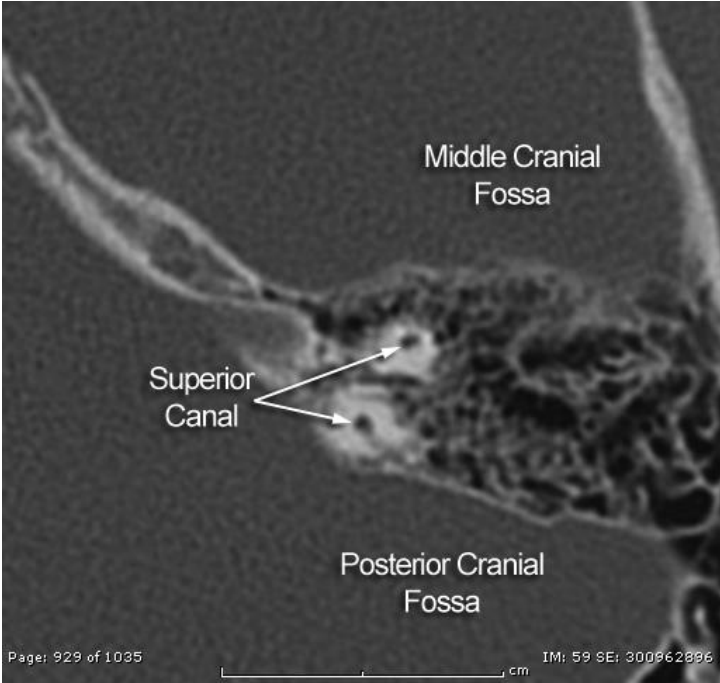


Radiology and Histology, Horizontal Sections

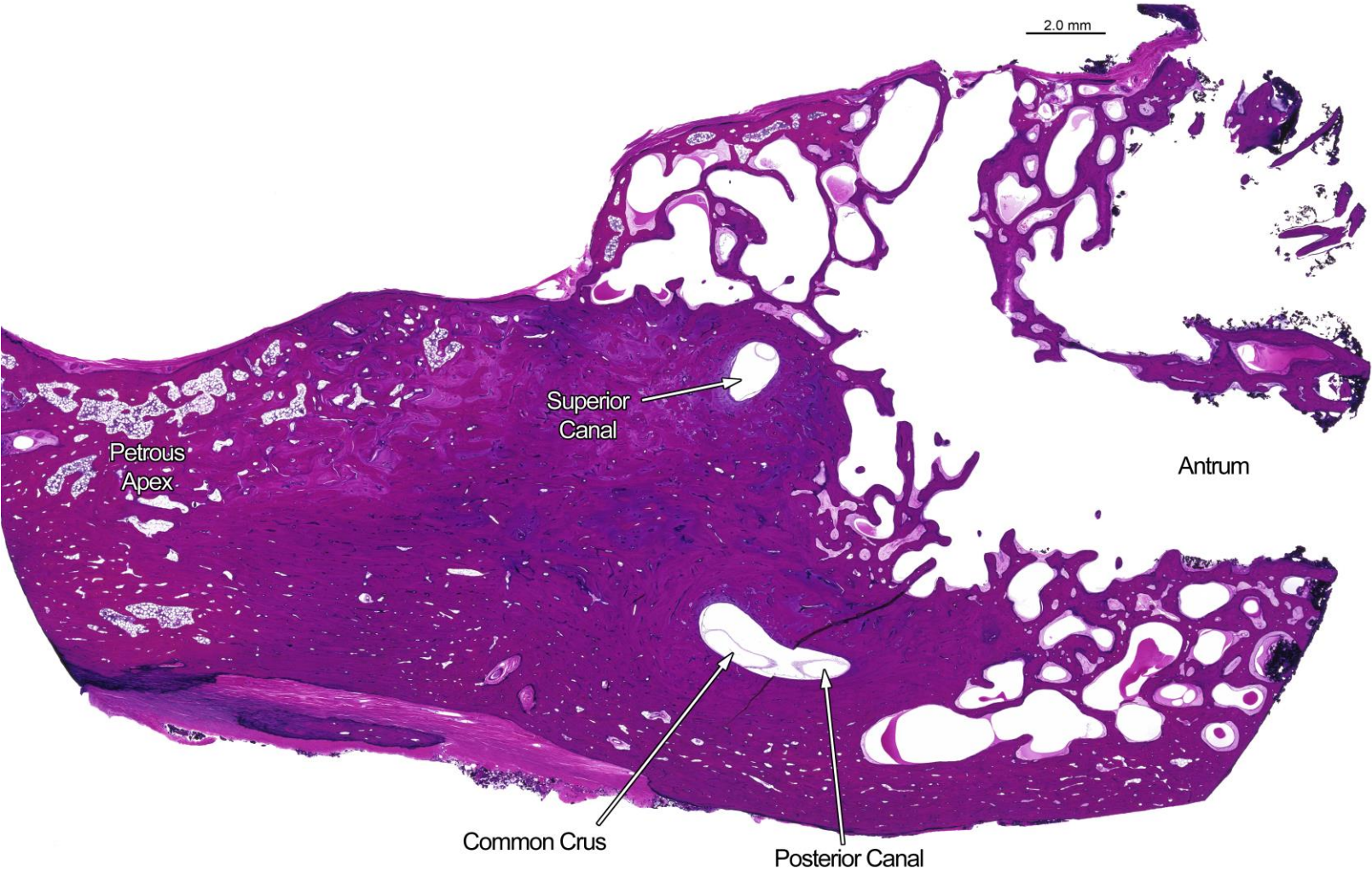
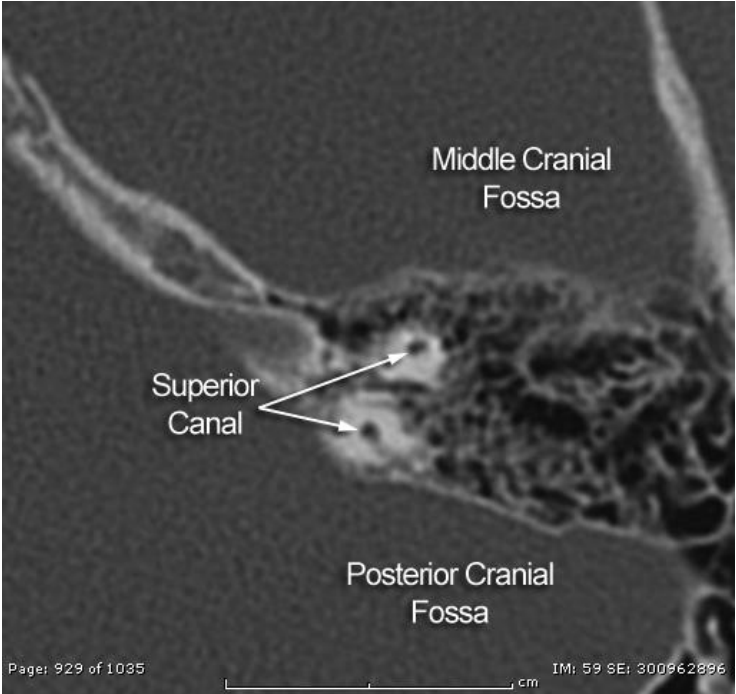
Otopathology Laboratory



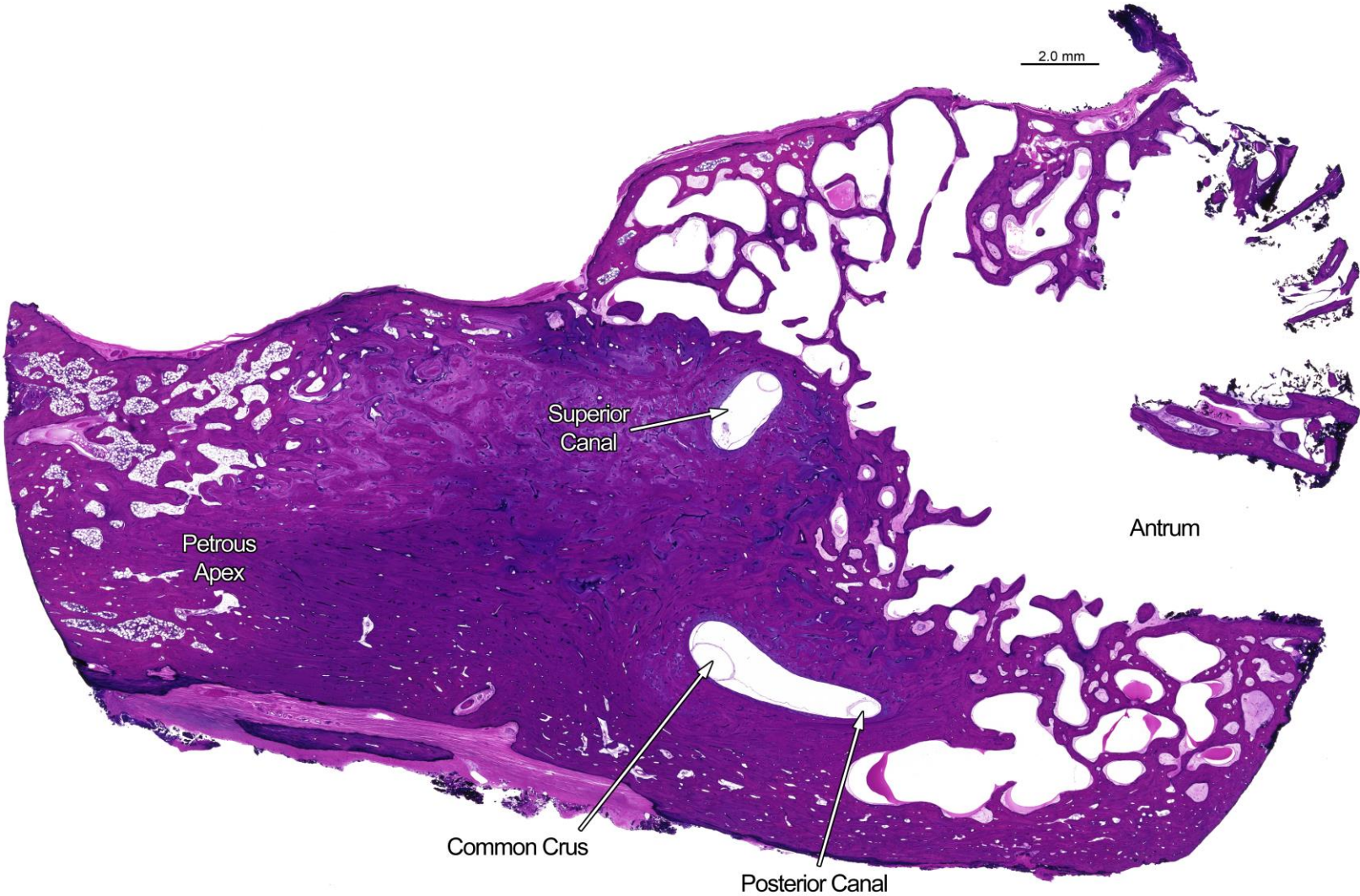
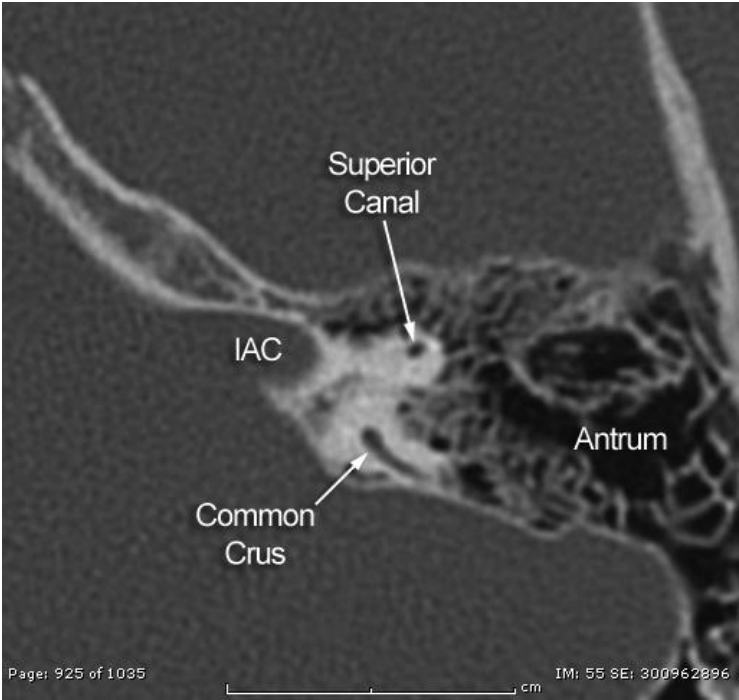
Section 51



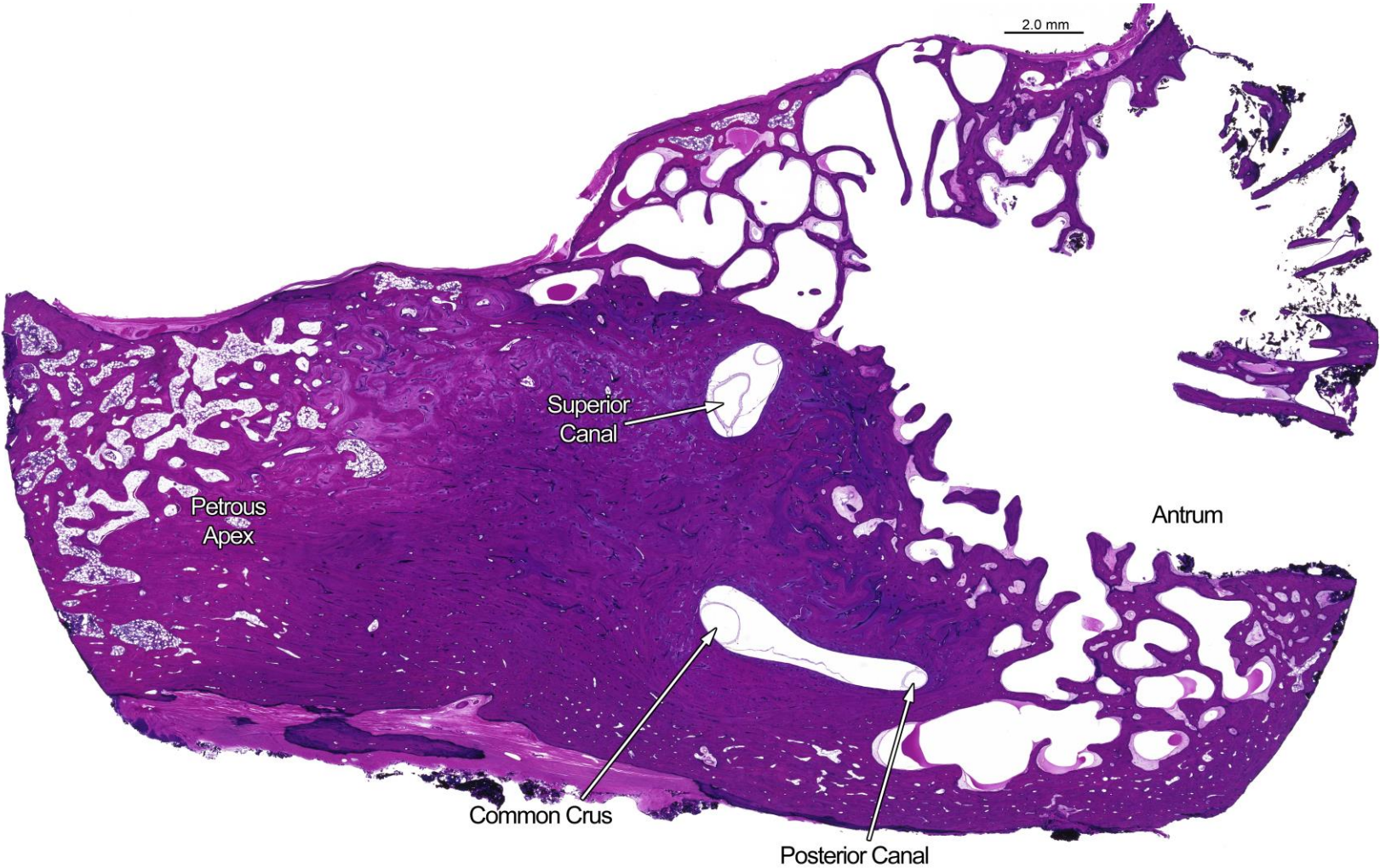
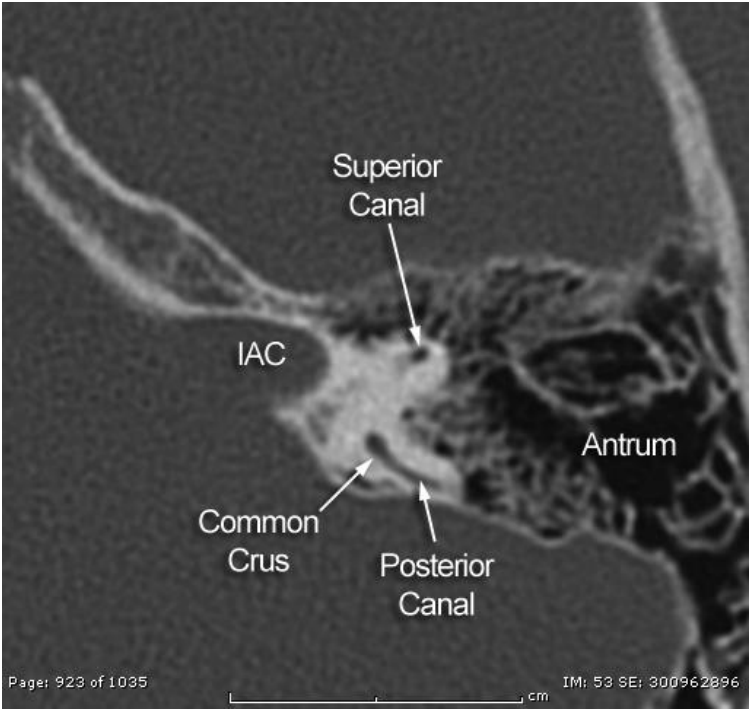
Section 71



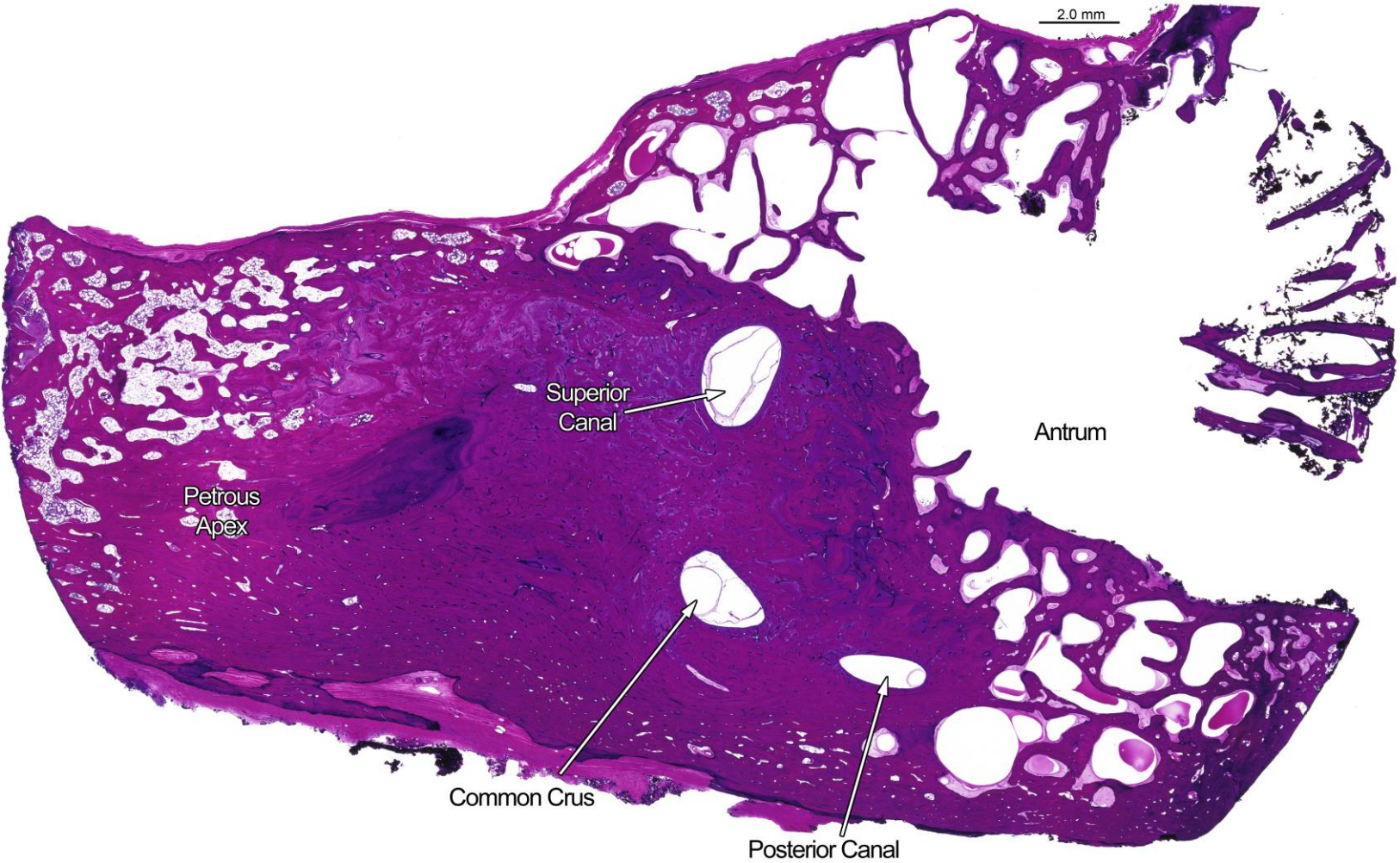
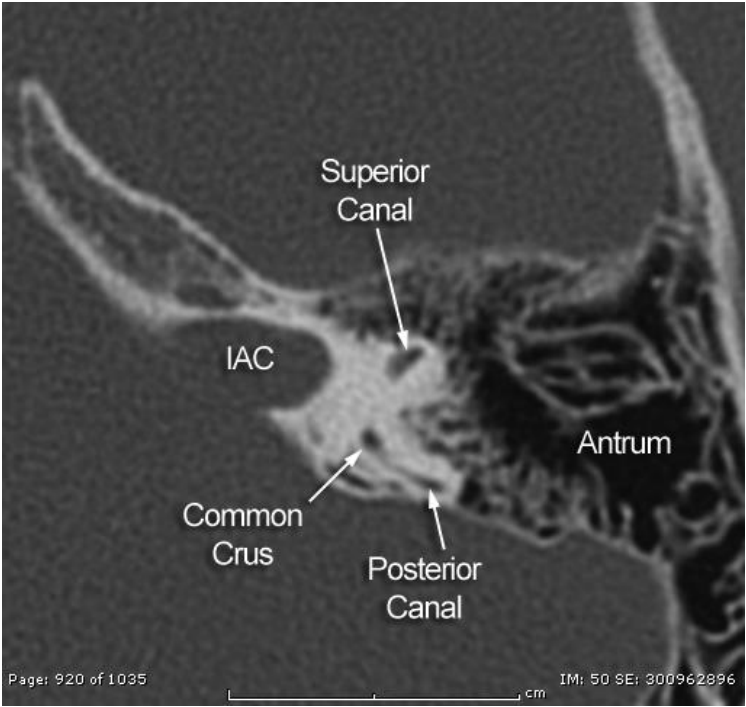
Section 91



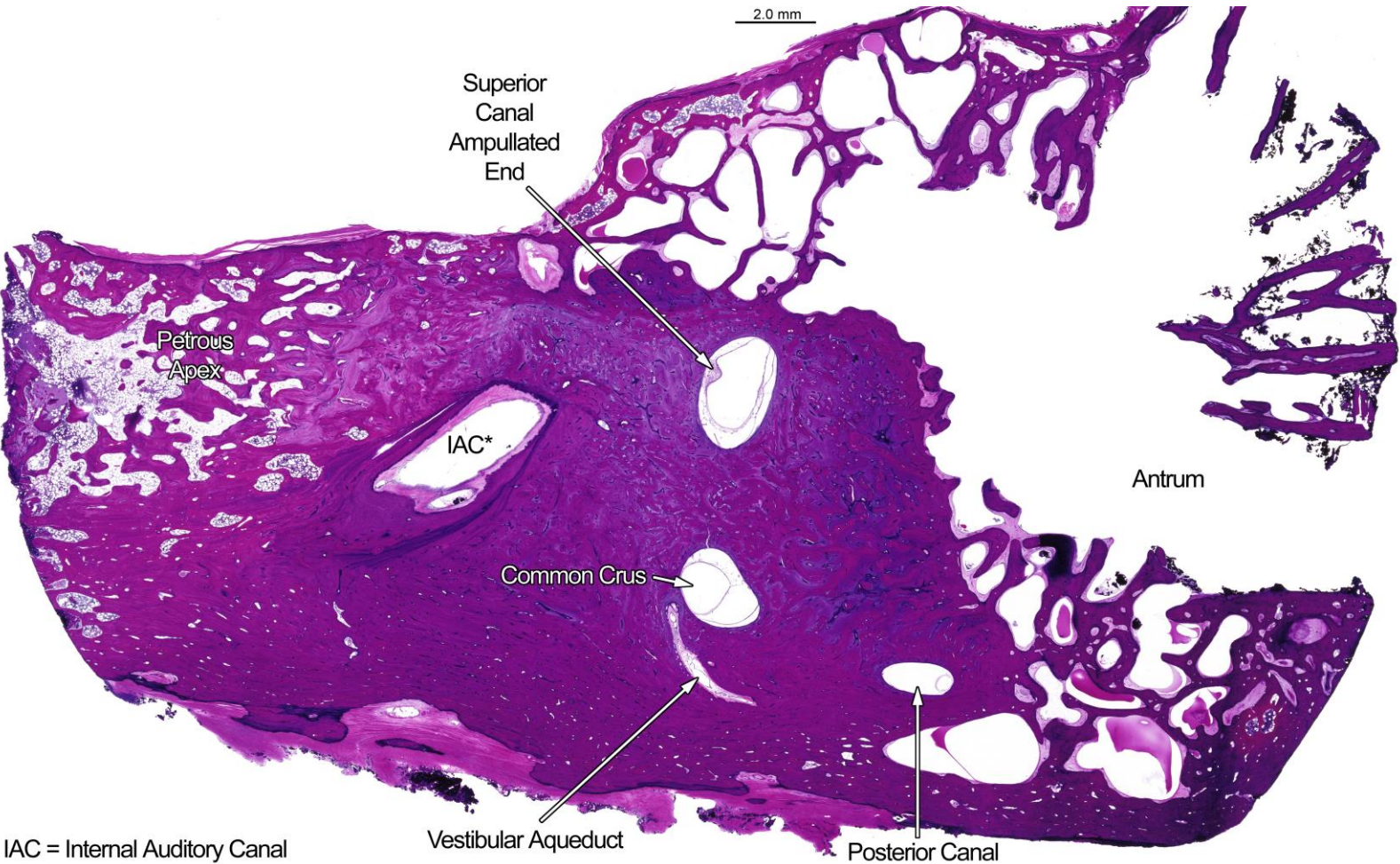
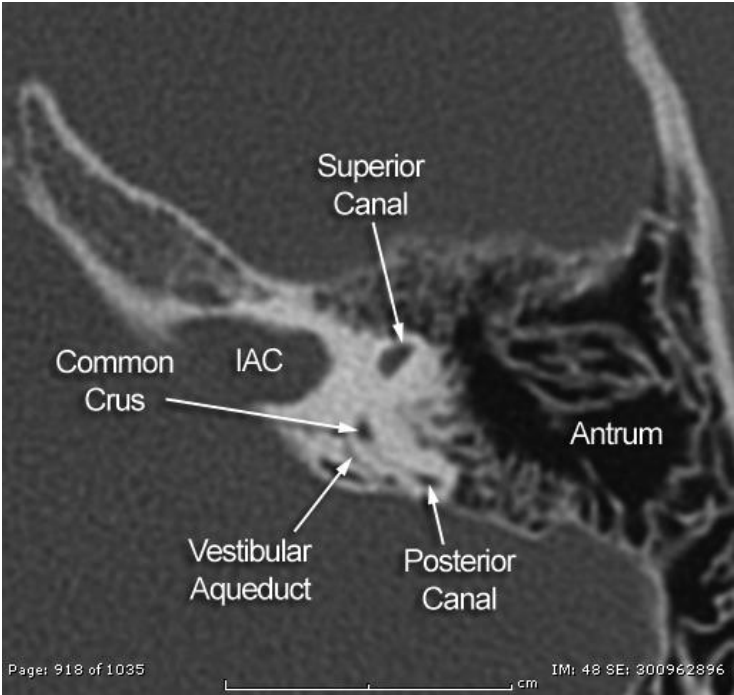
Section 111



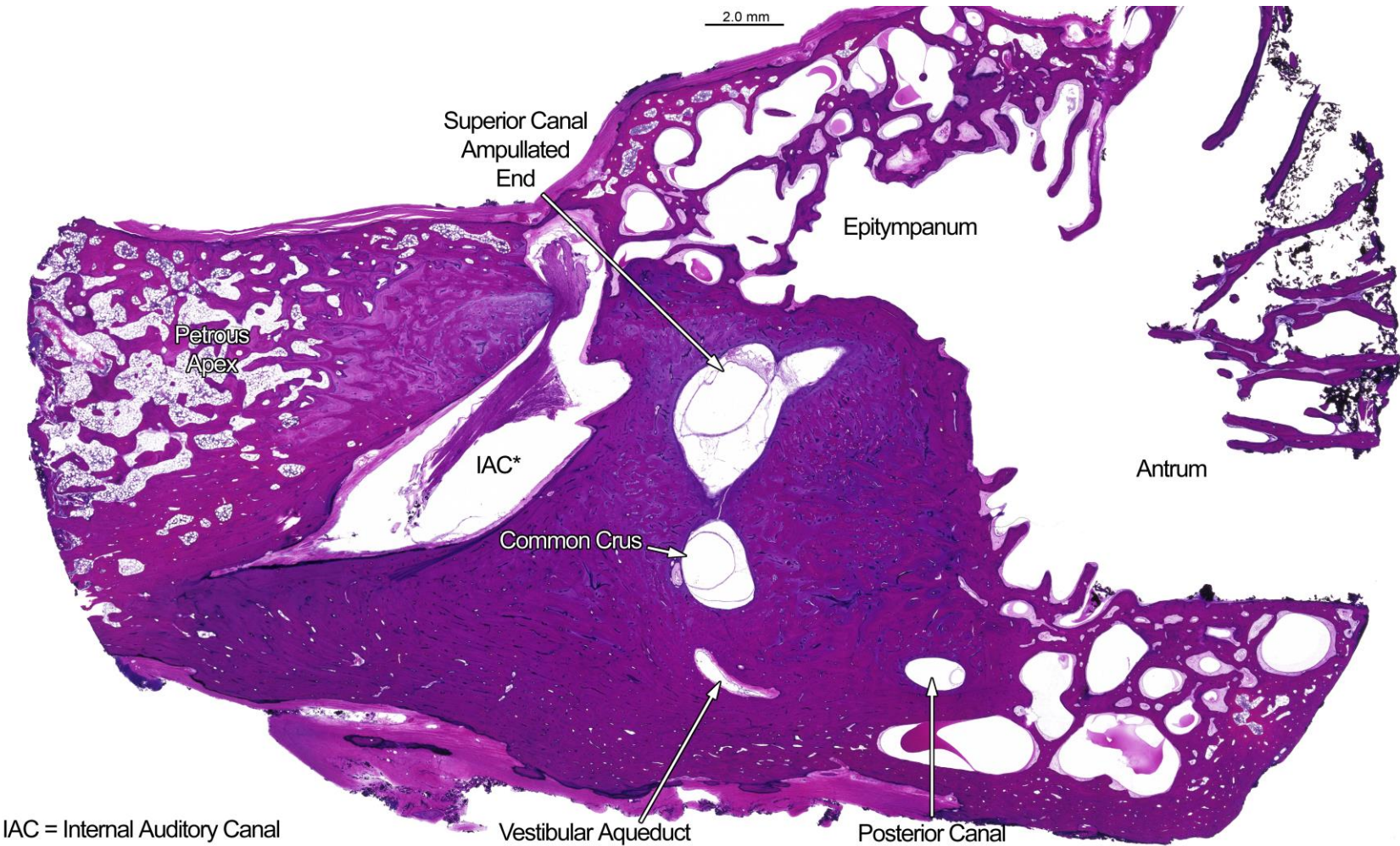
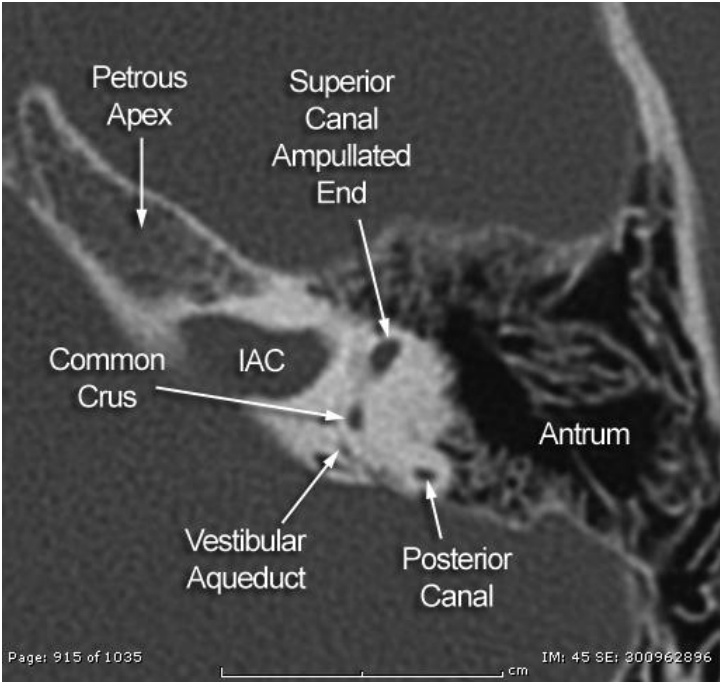
Section 131



Section 151



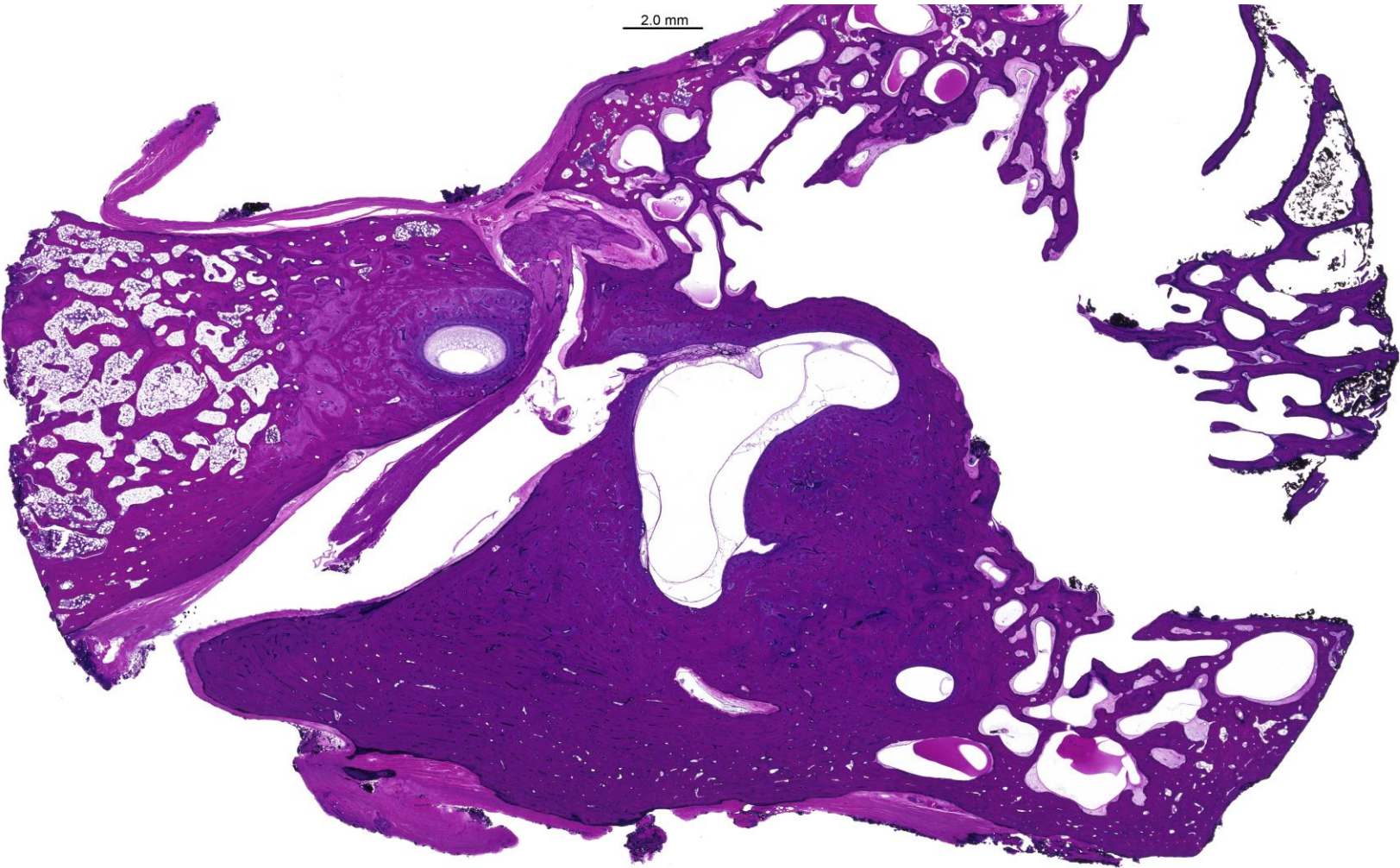
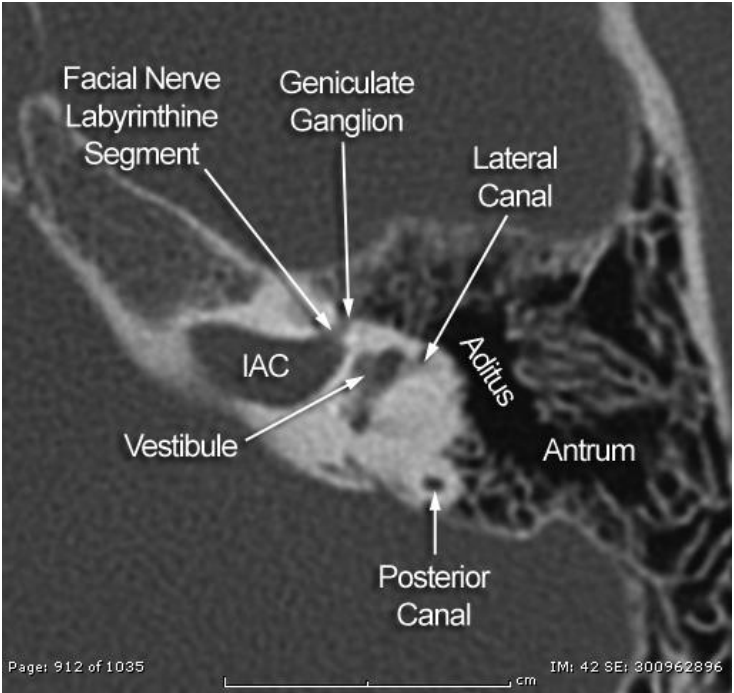
Section 171



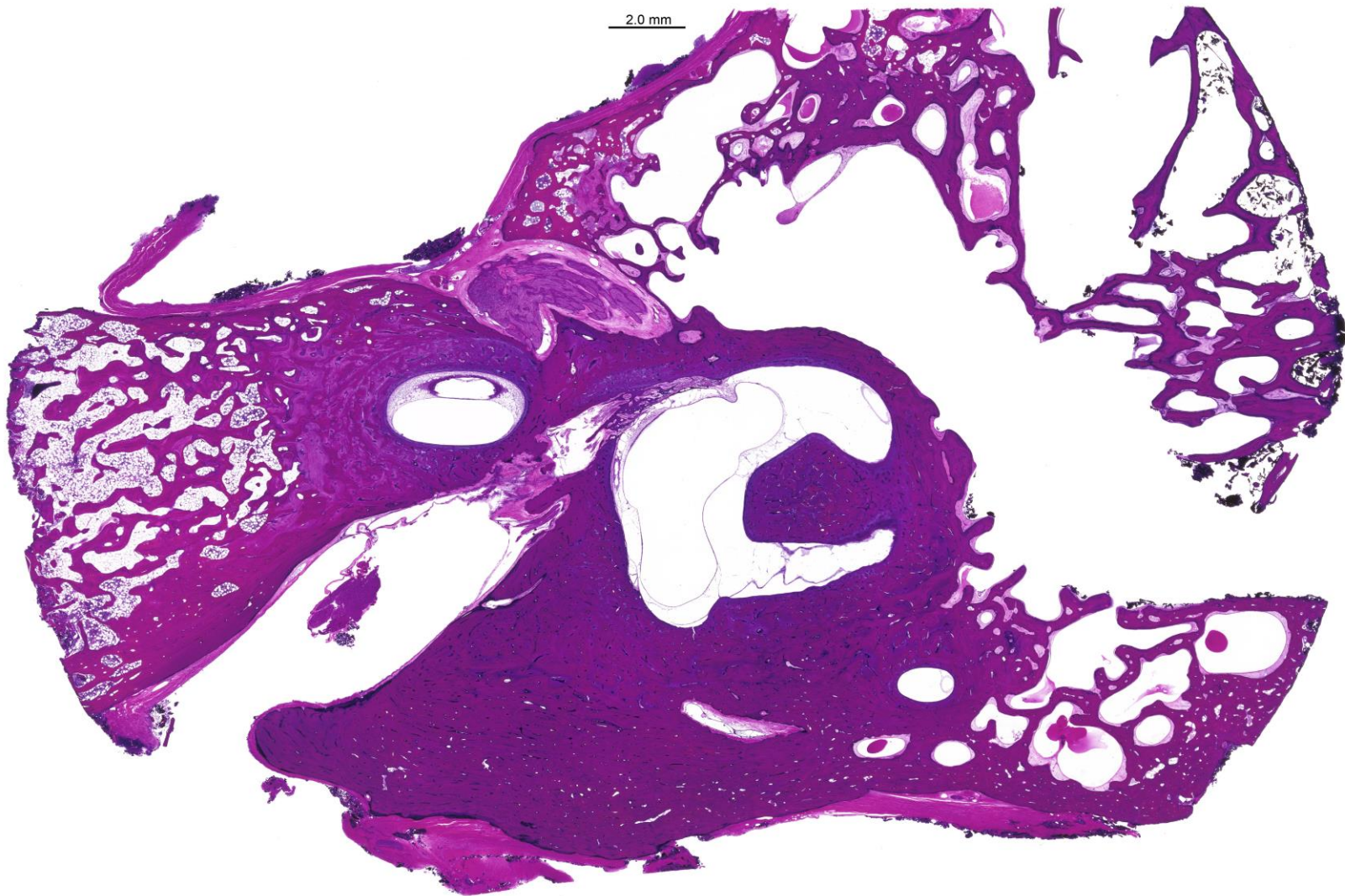
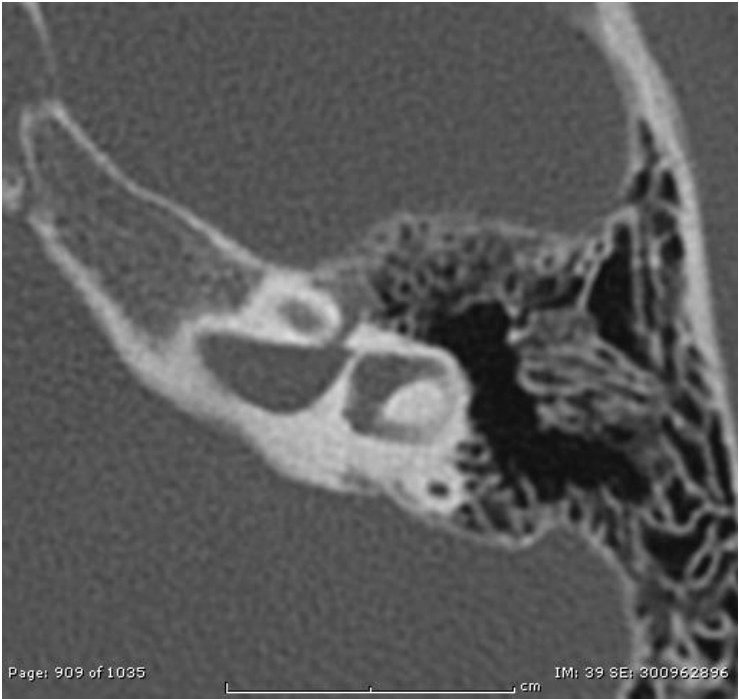
IAC = Internal Auditory Canal



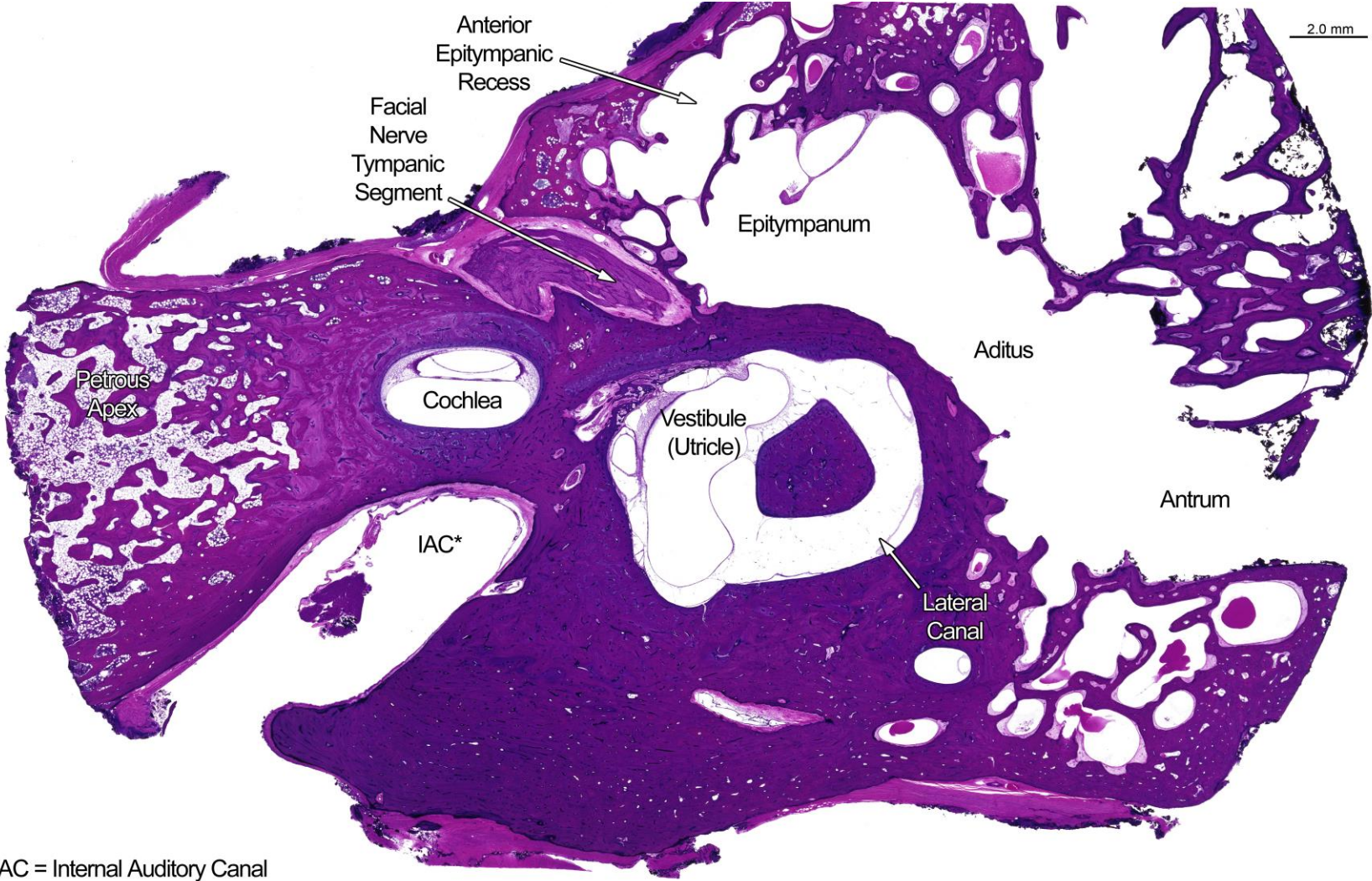
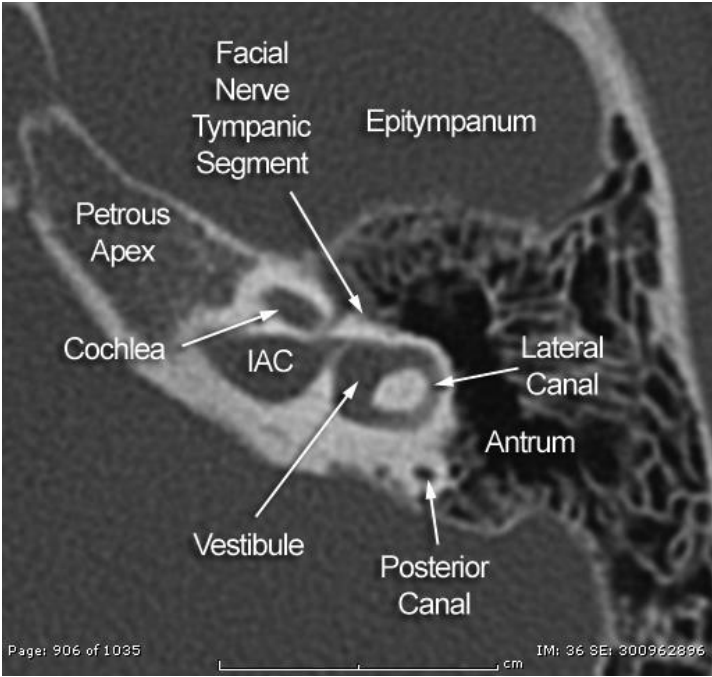
Section 191



Section 211



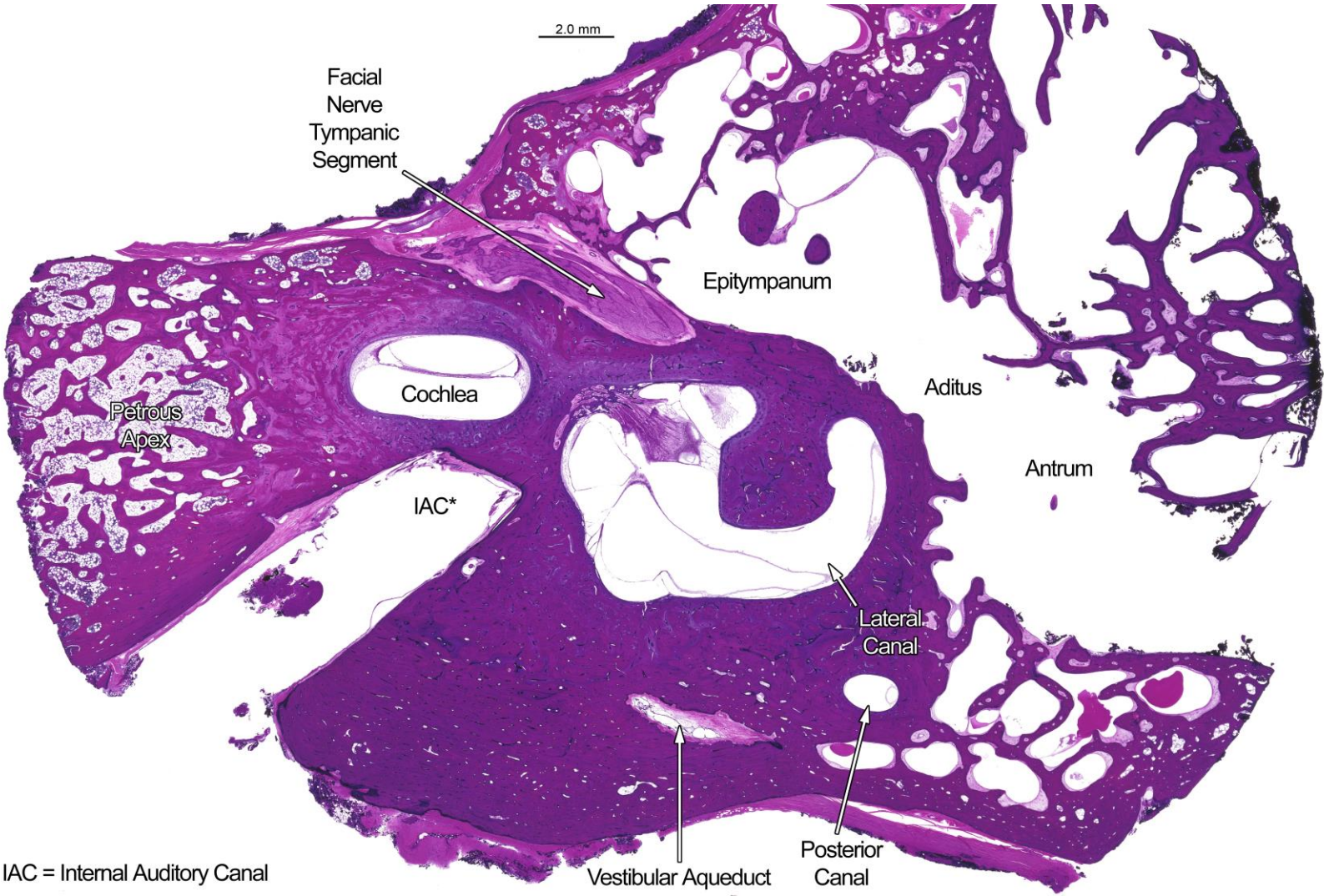
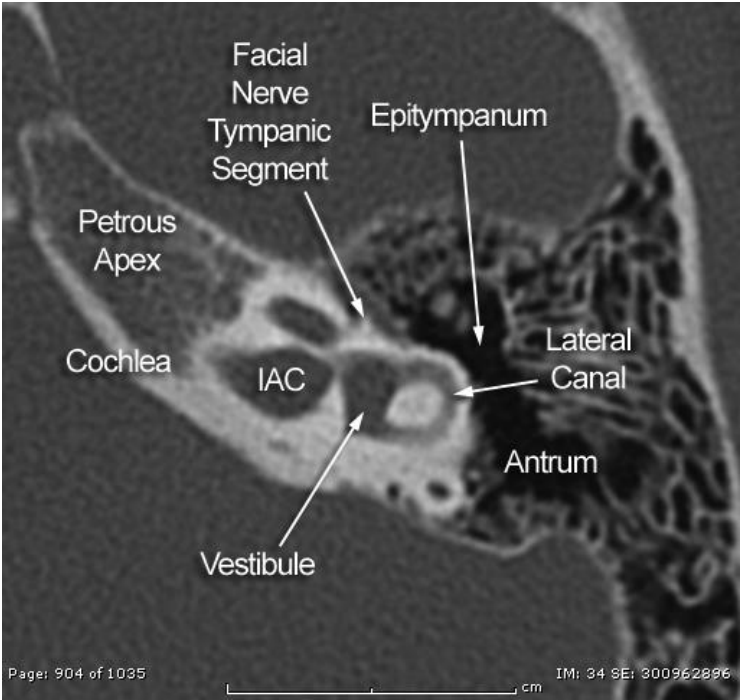
Section 231



IAC = Internal Auditory Canal

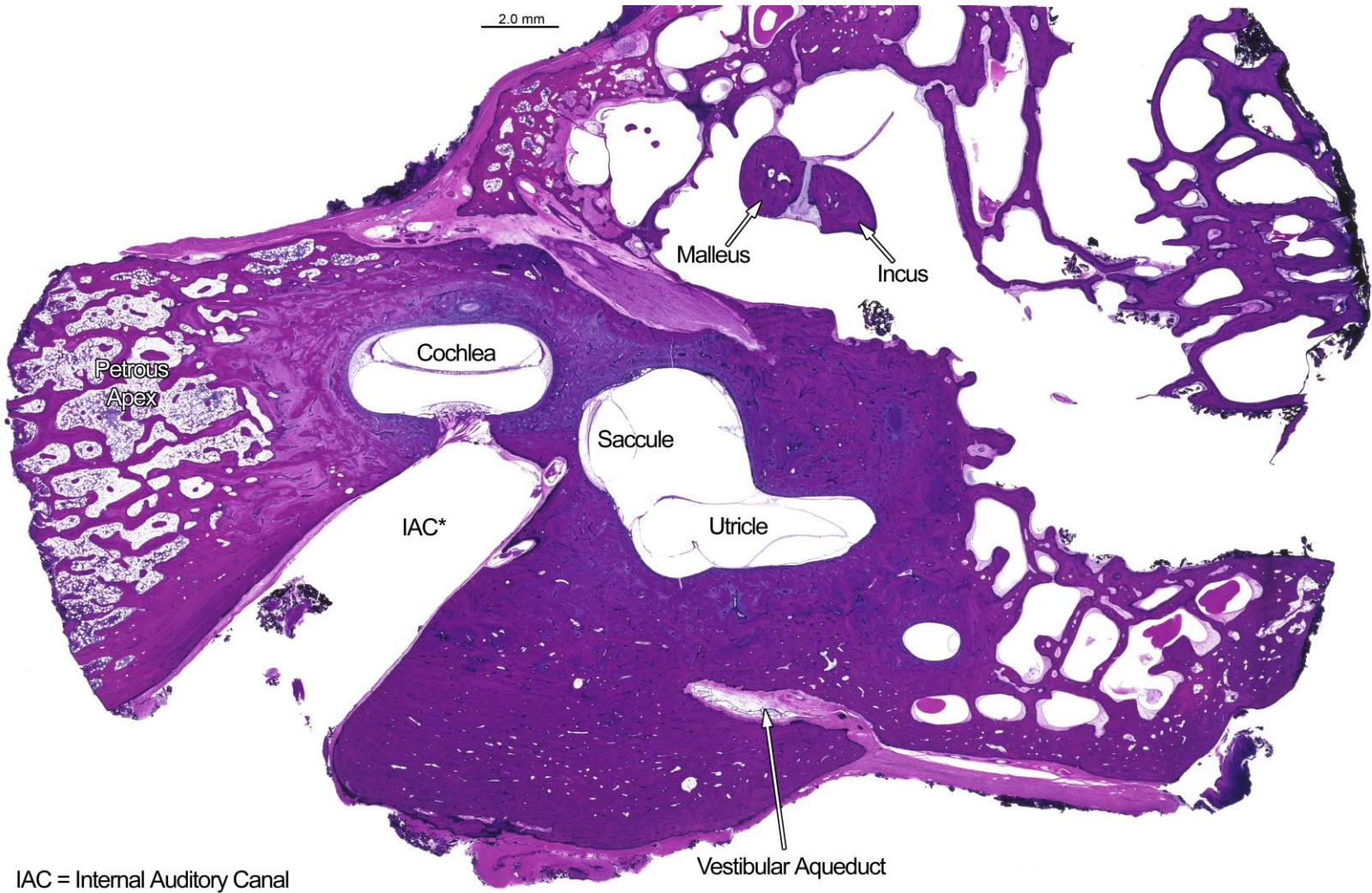
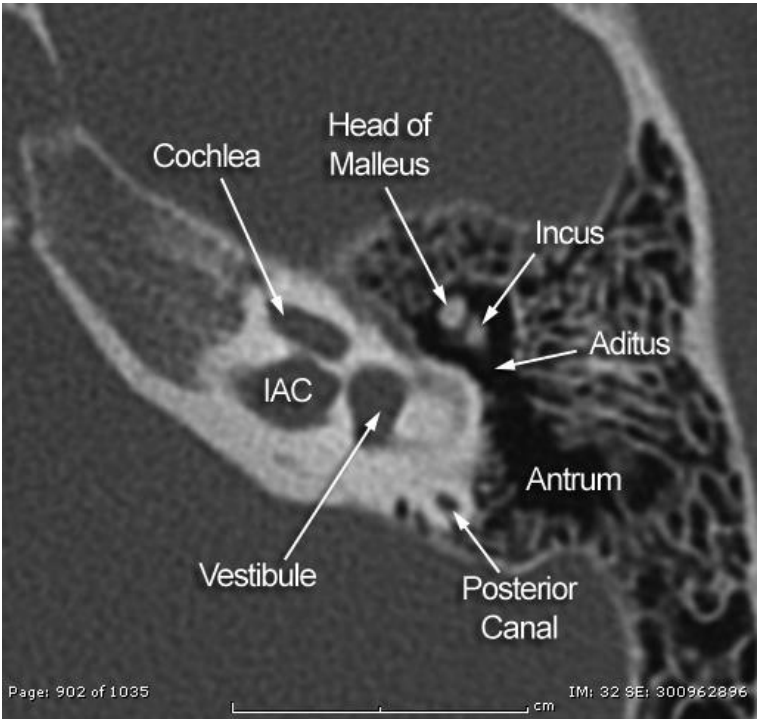


Section 251

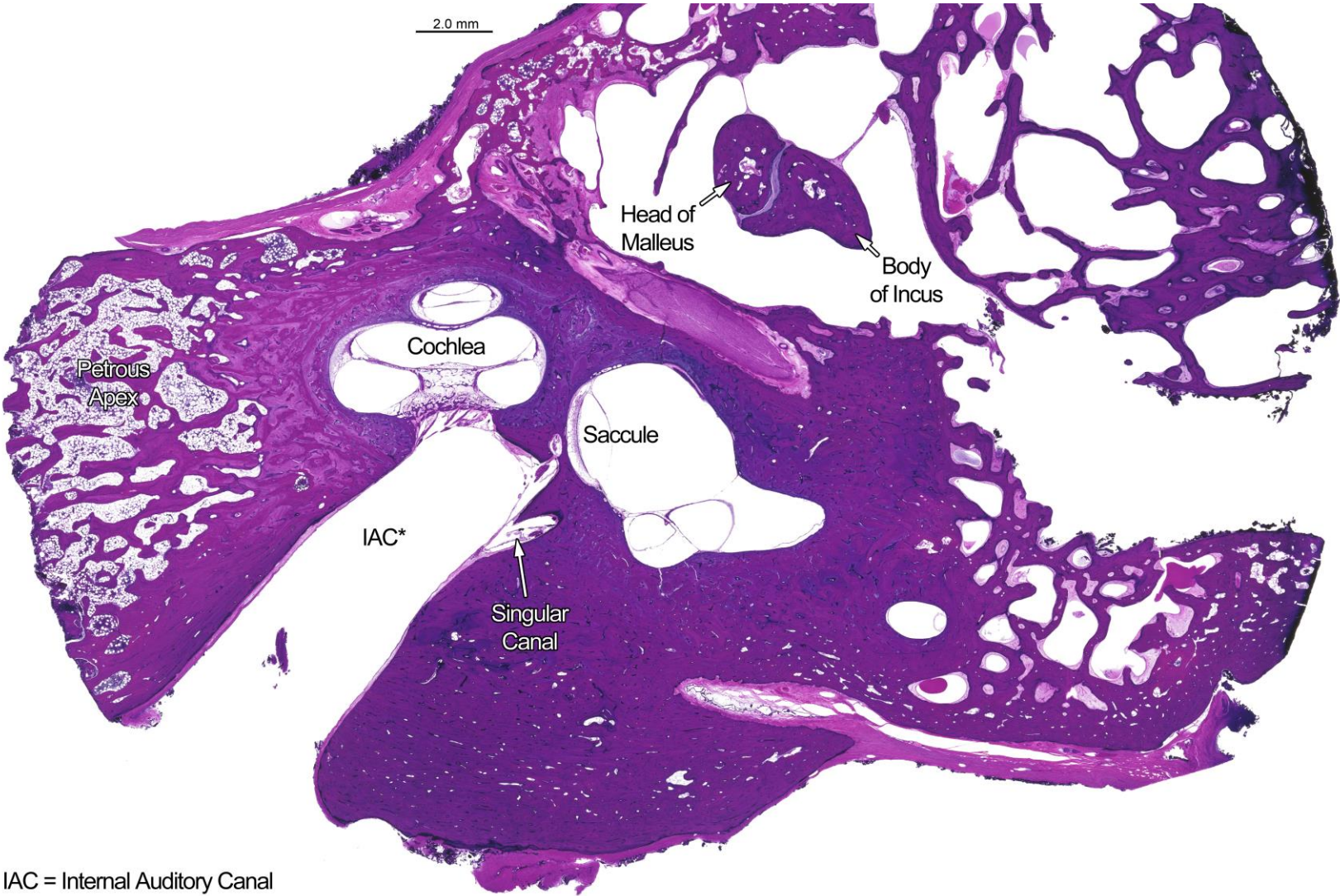
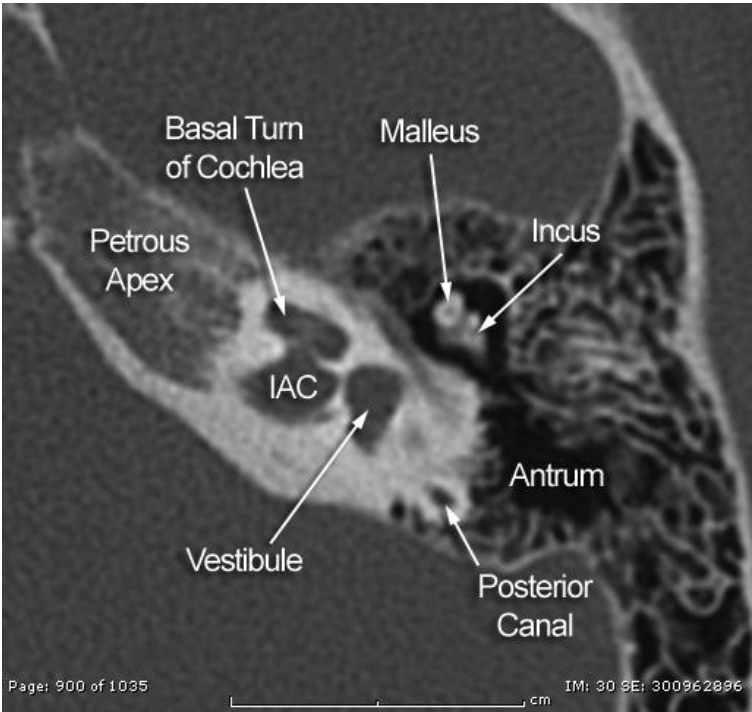


IAC = Internal Auditory Canal

Section 271



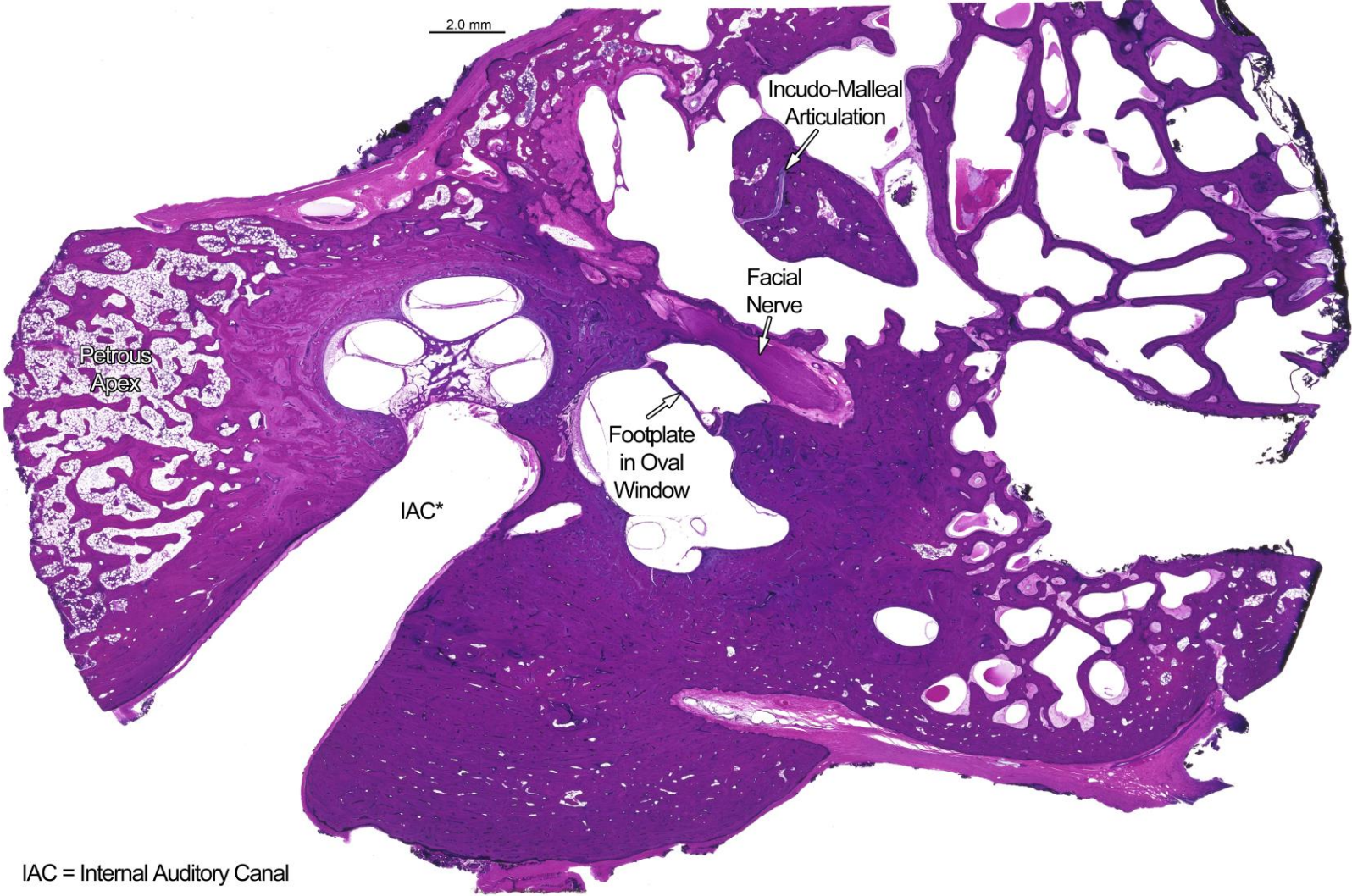
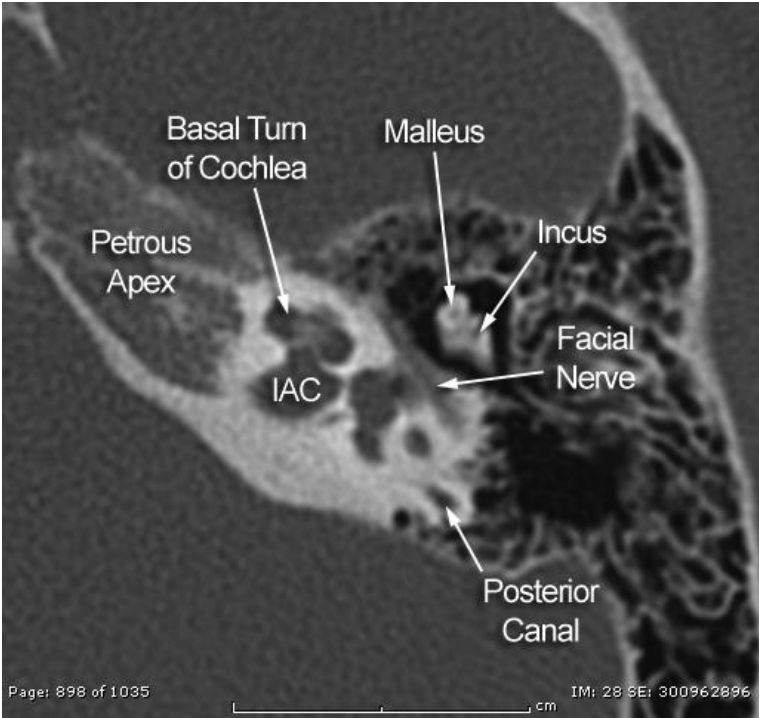
Section 291



IAC = Internal Auditory Canal

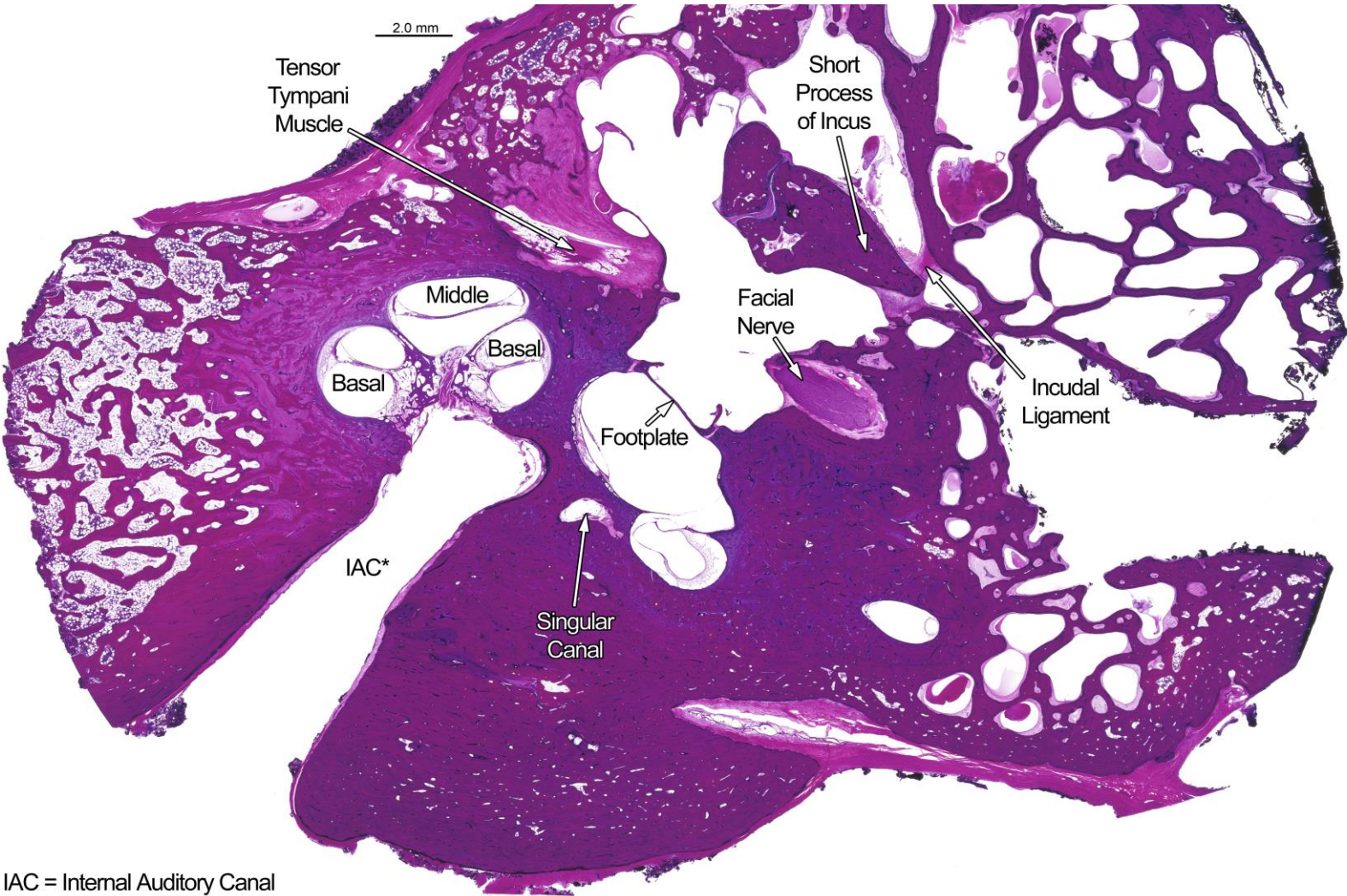
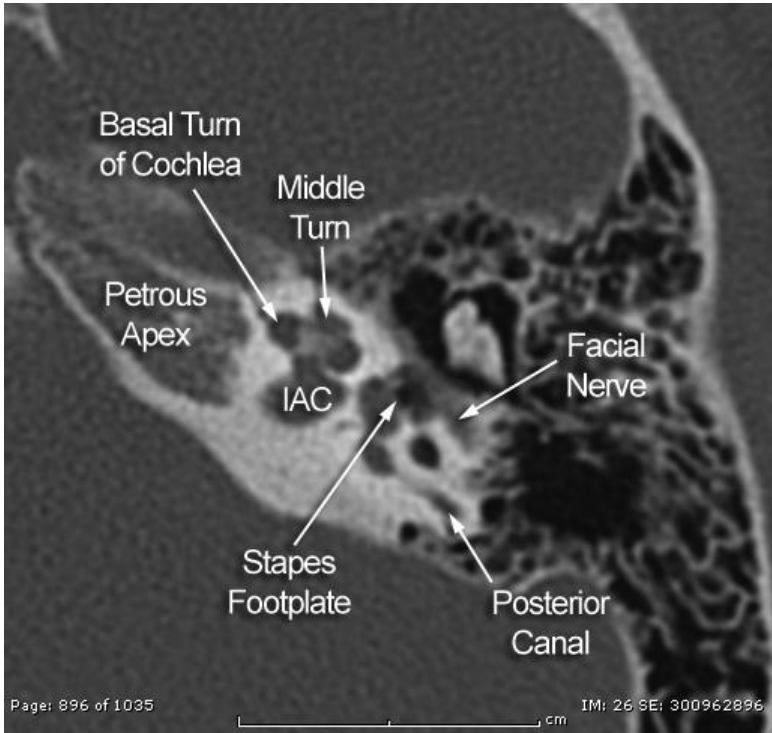


Section 311



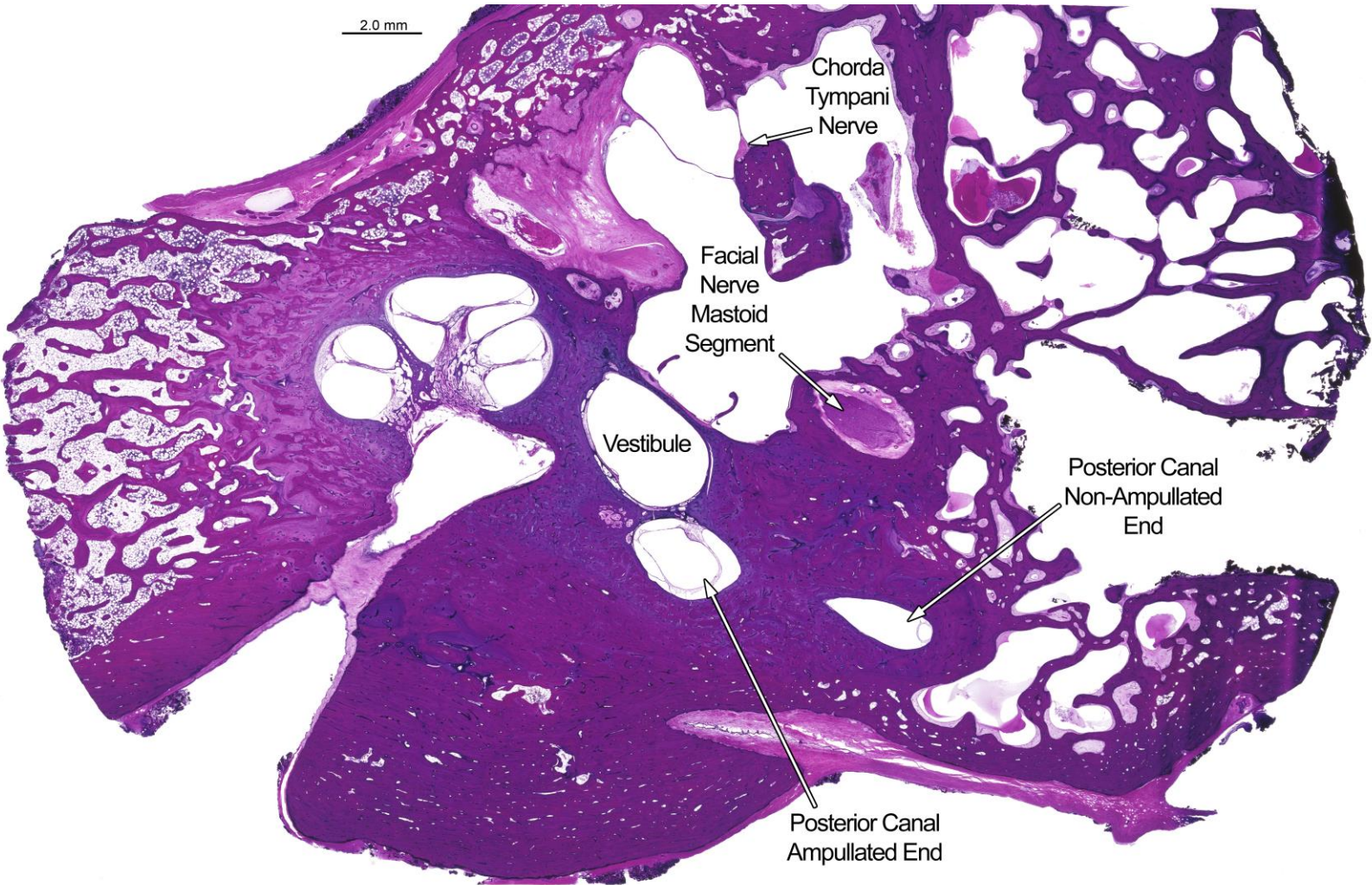
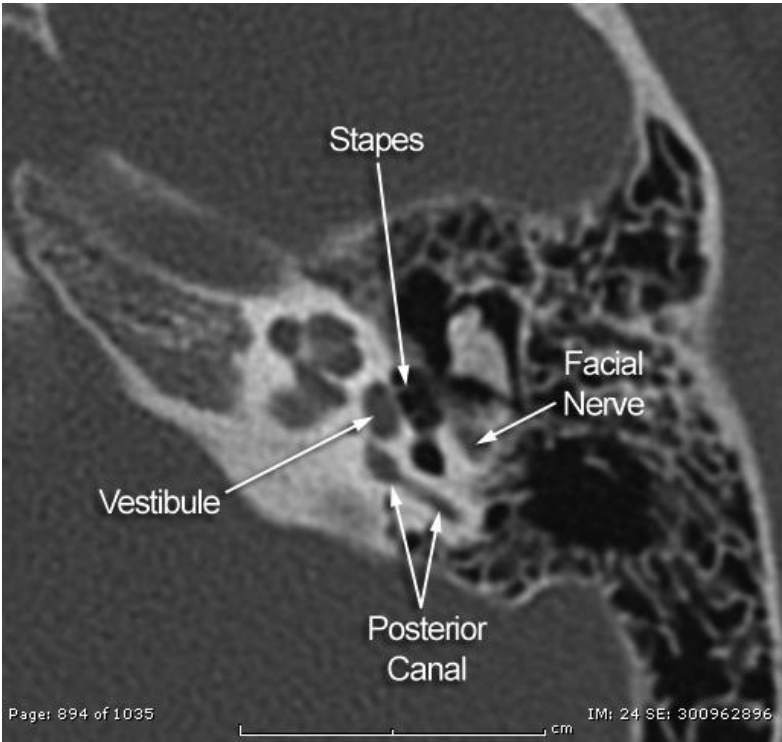
IAC = Internal Auditory Canal

Section 331

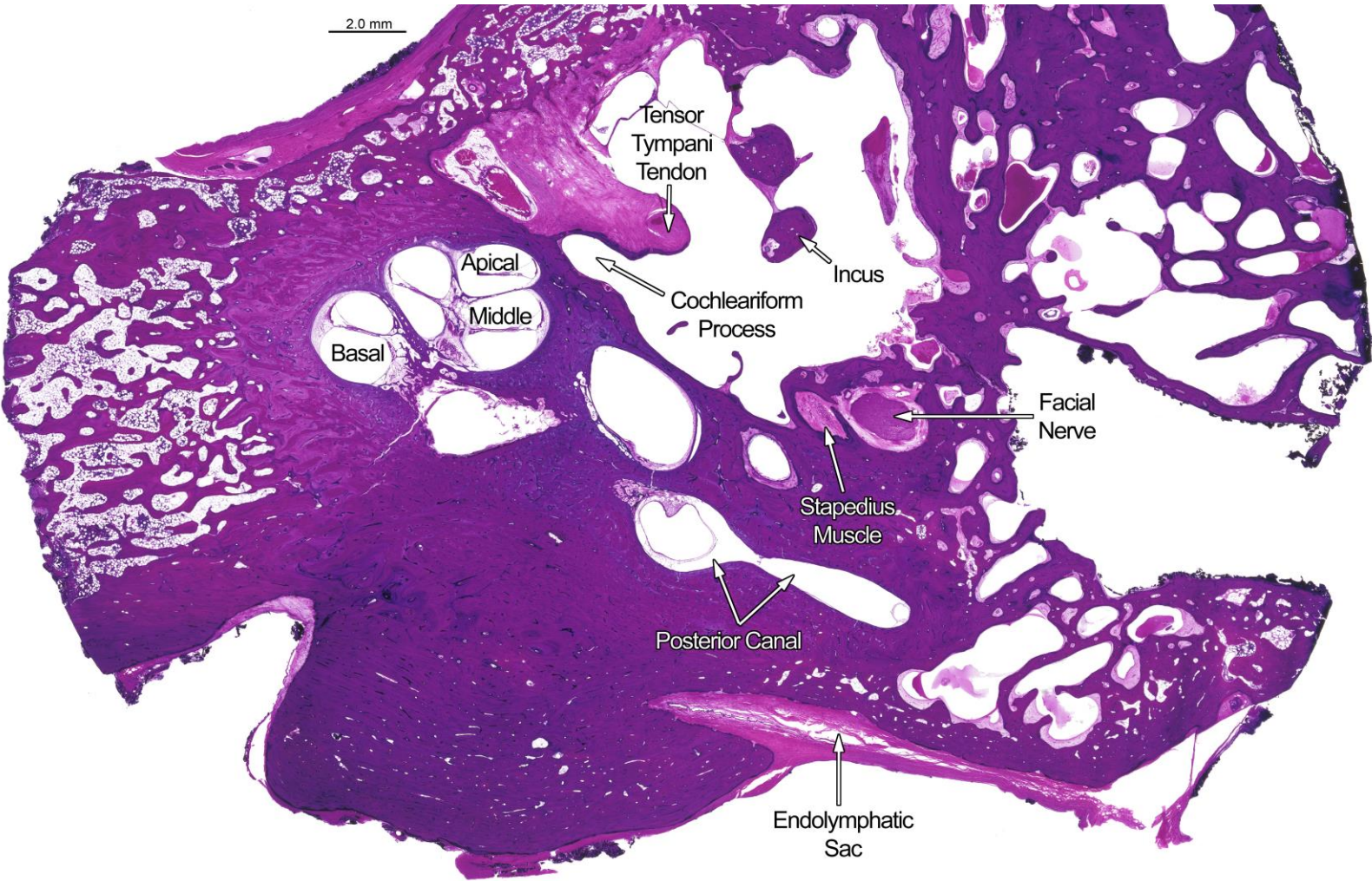
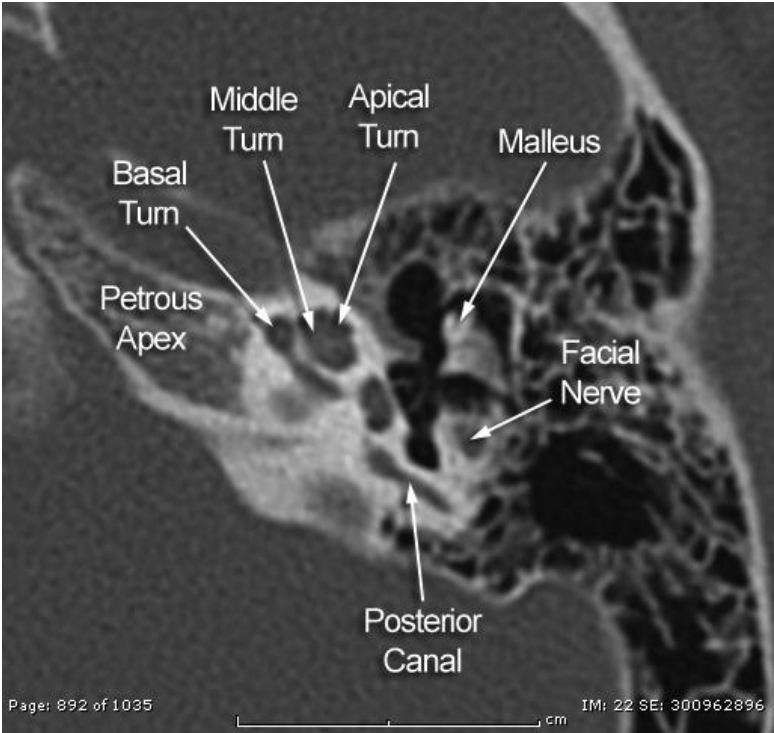


IAC = Internal Auditory Canal

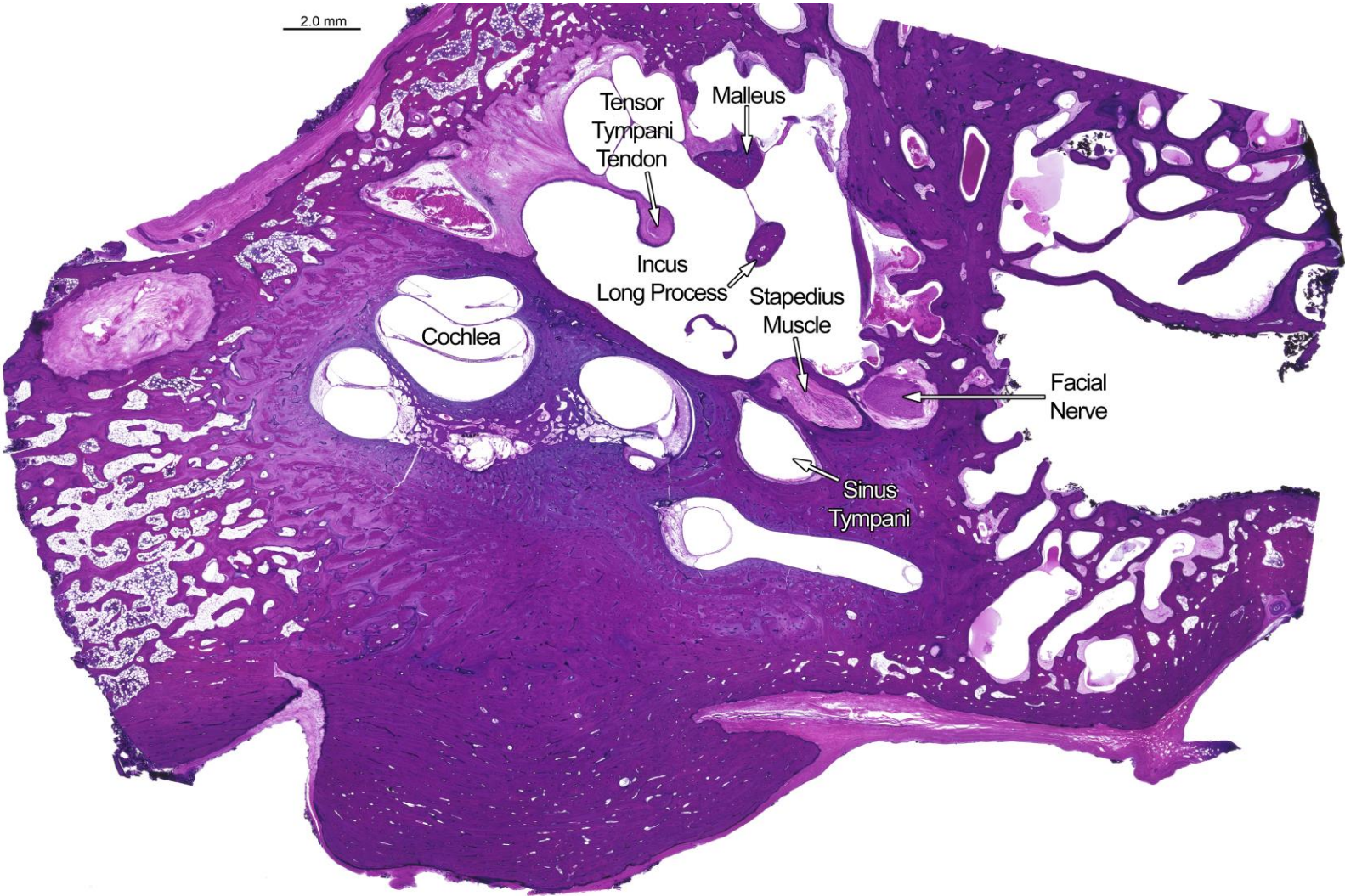
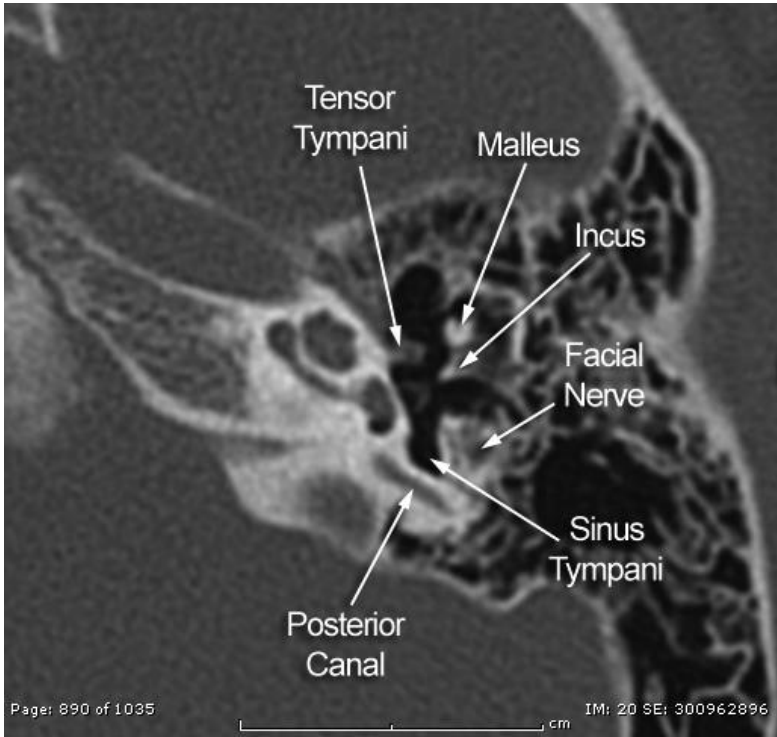
Section 351



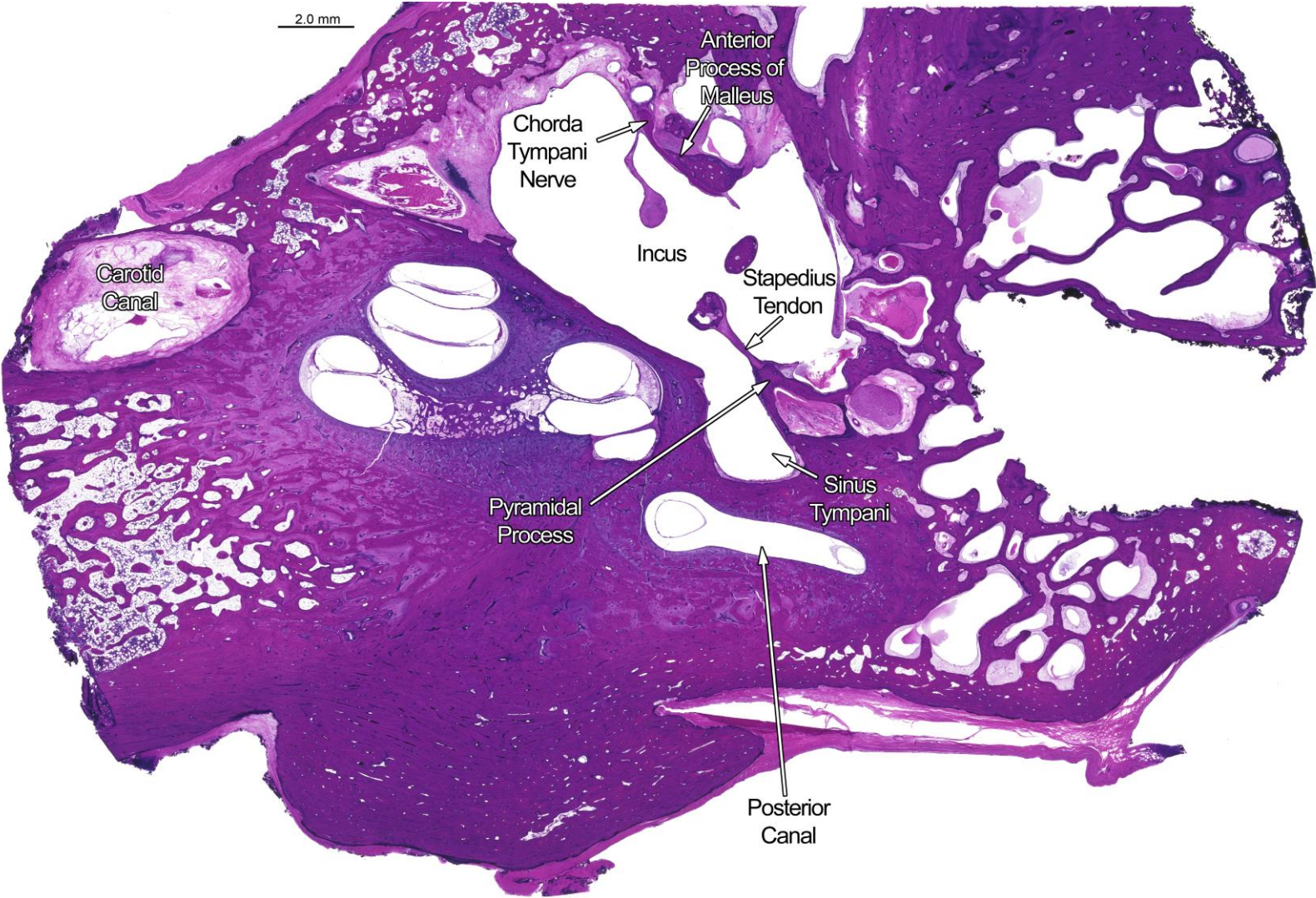
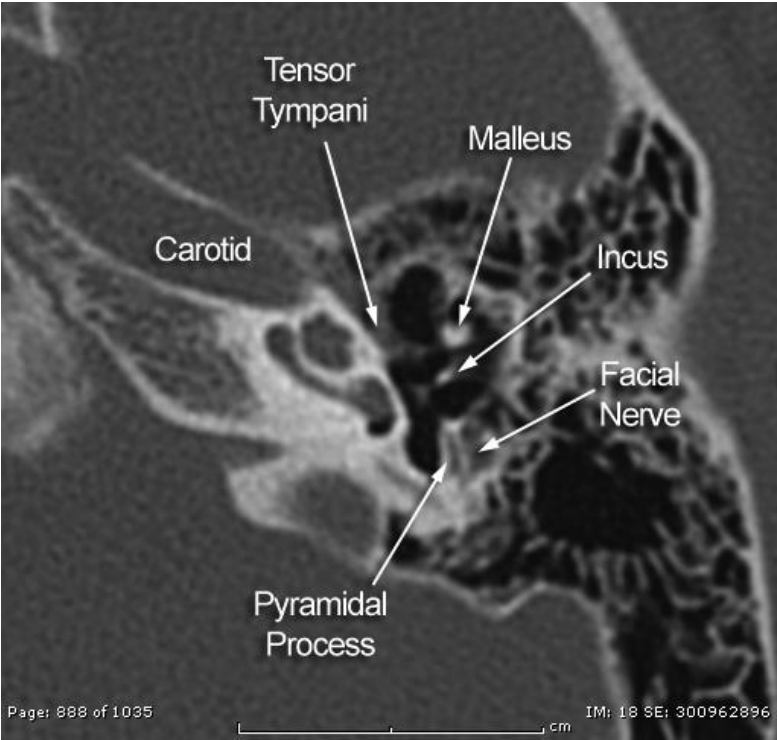
Section 371



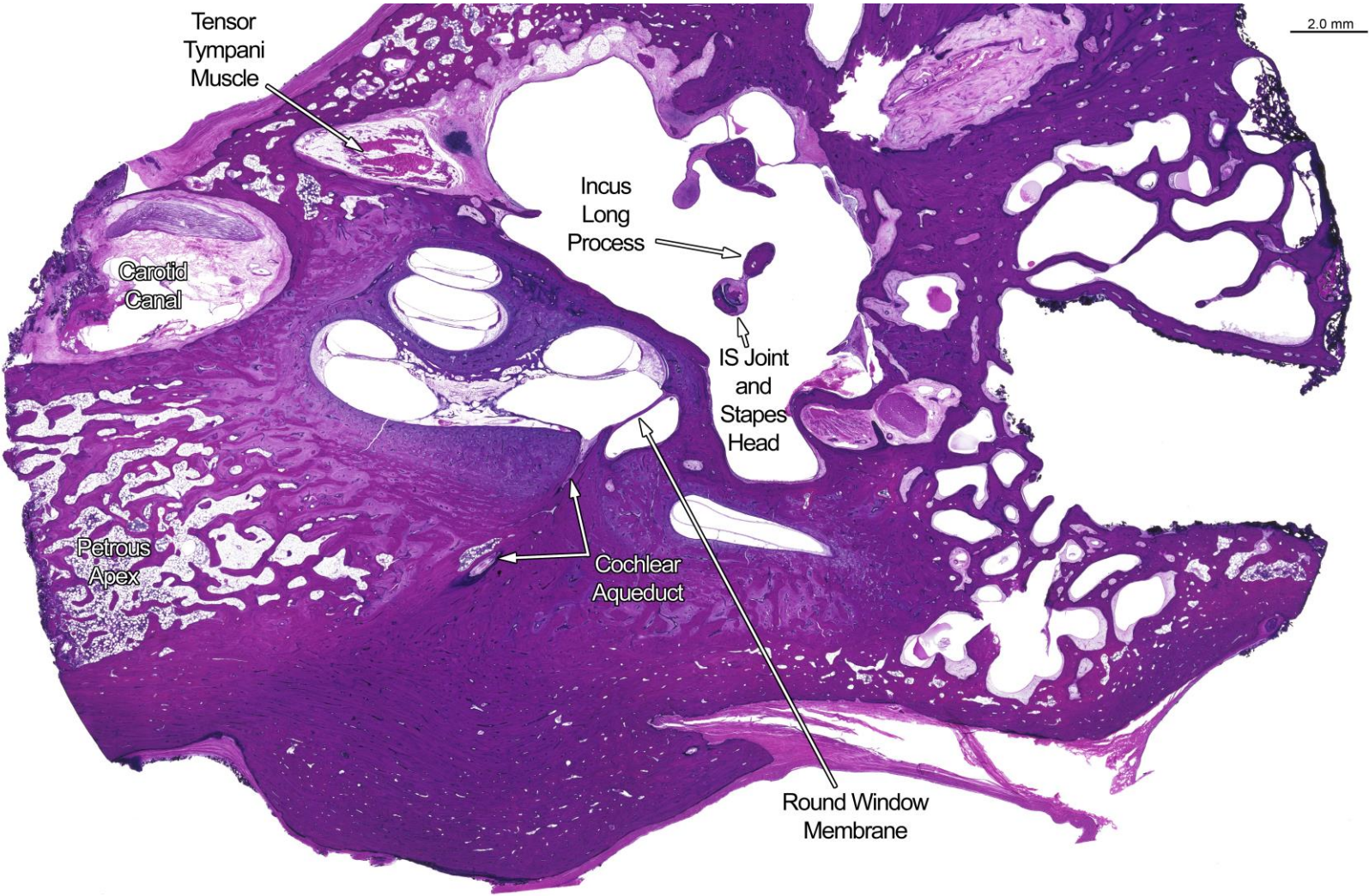
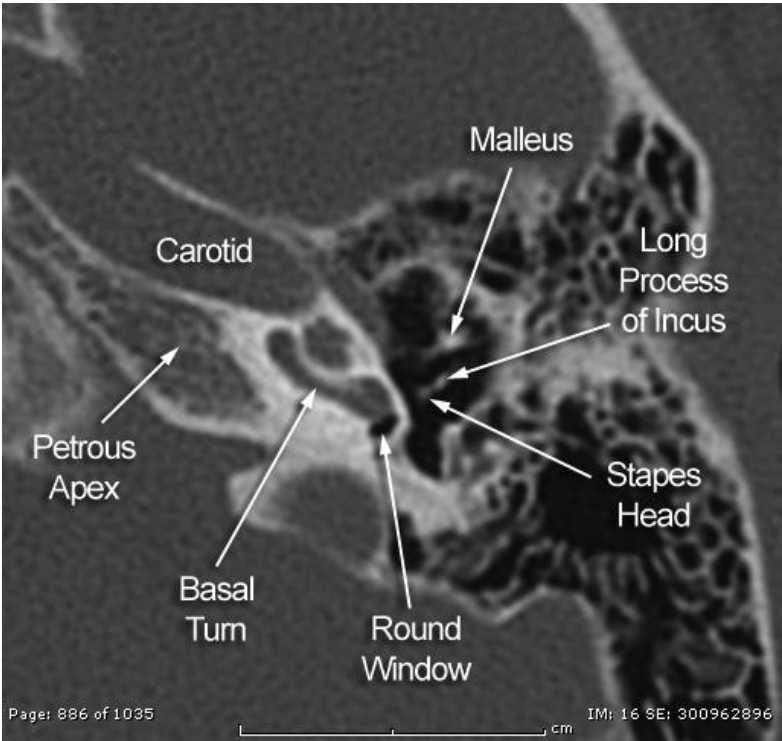
Section 391



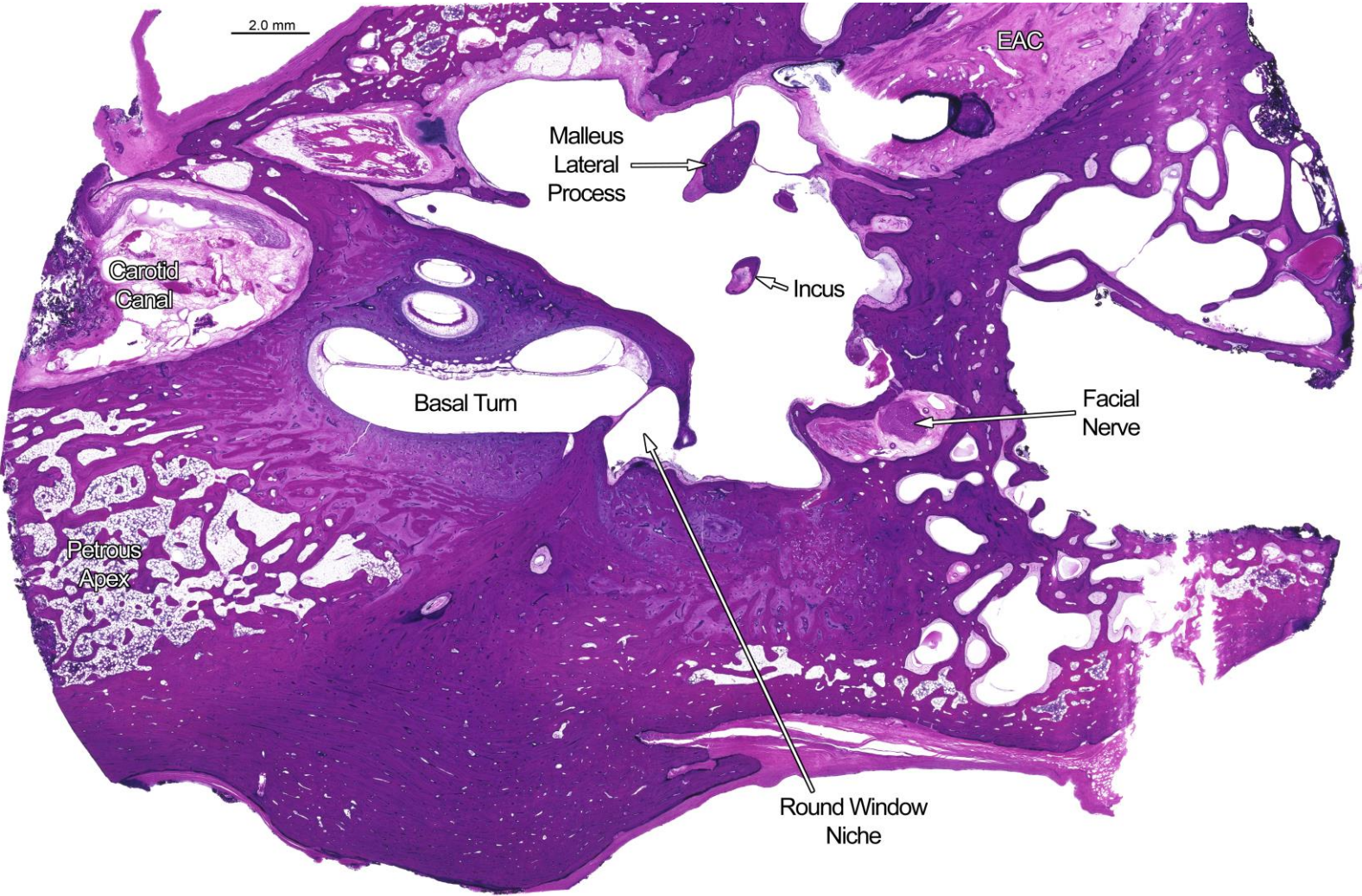
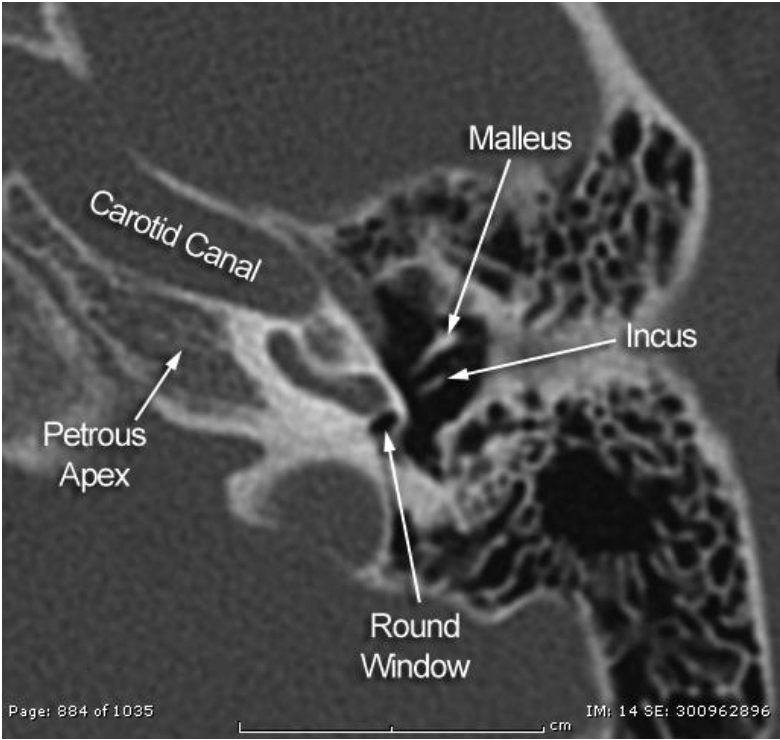
Section 411



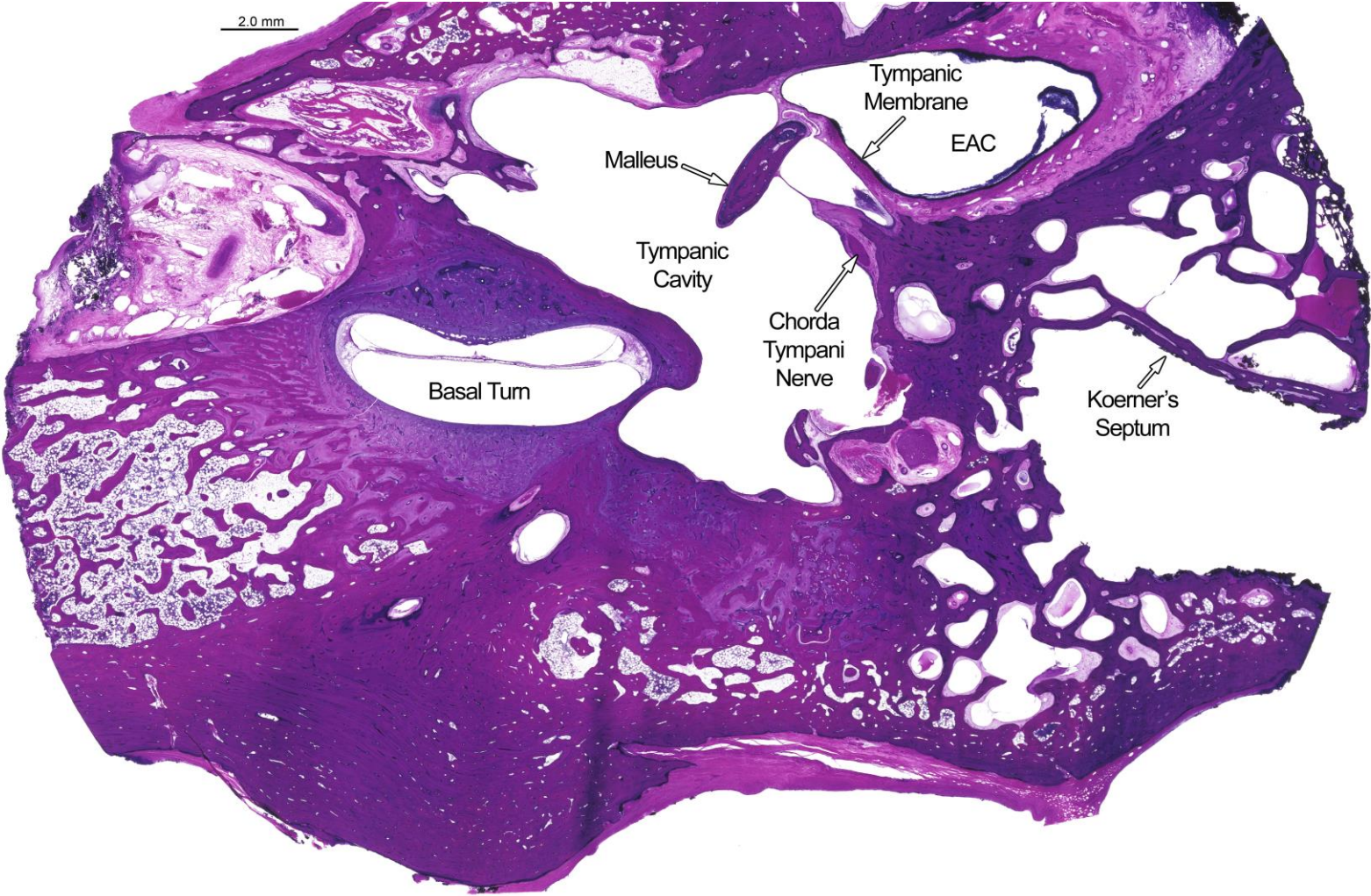
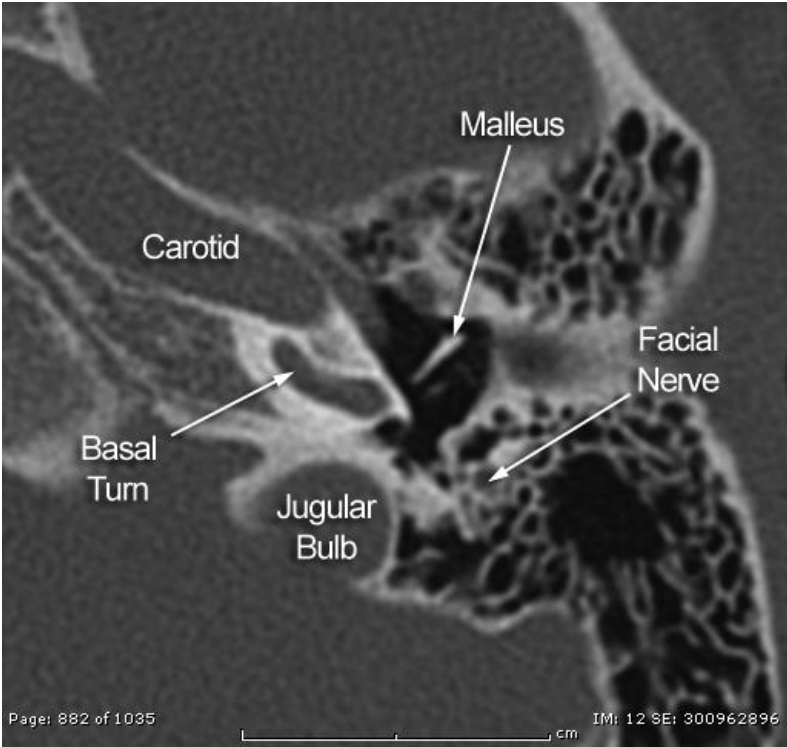
Section 431



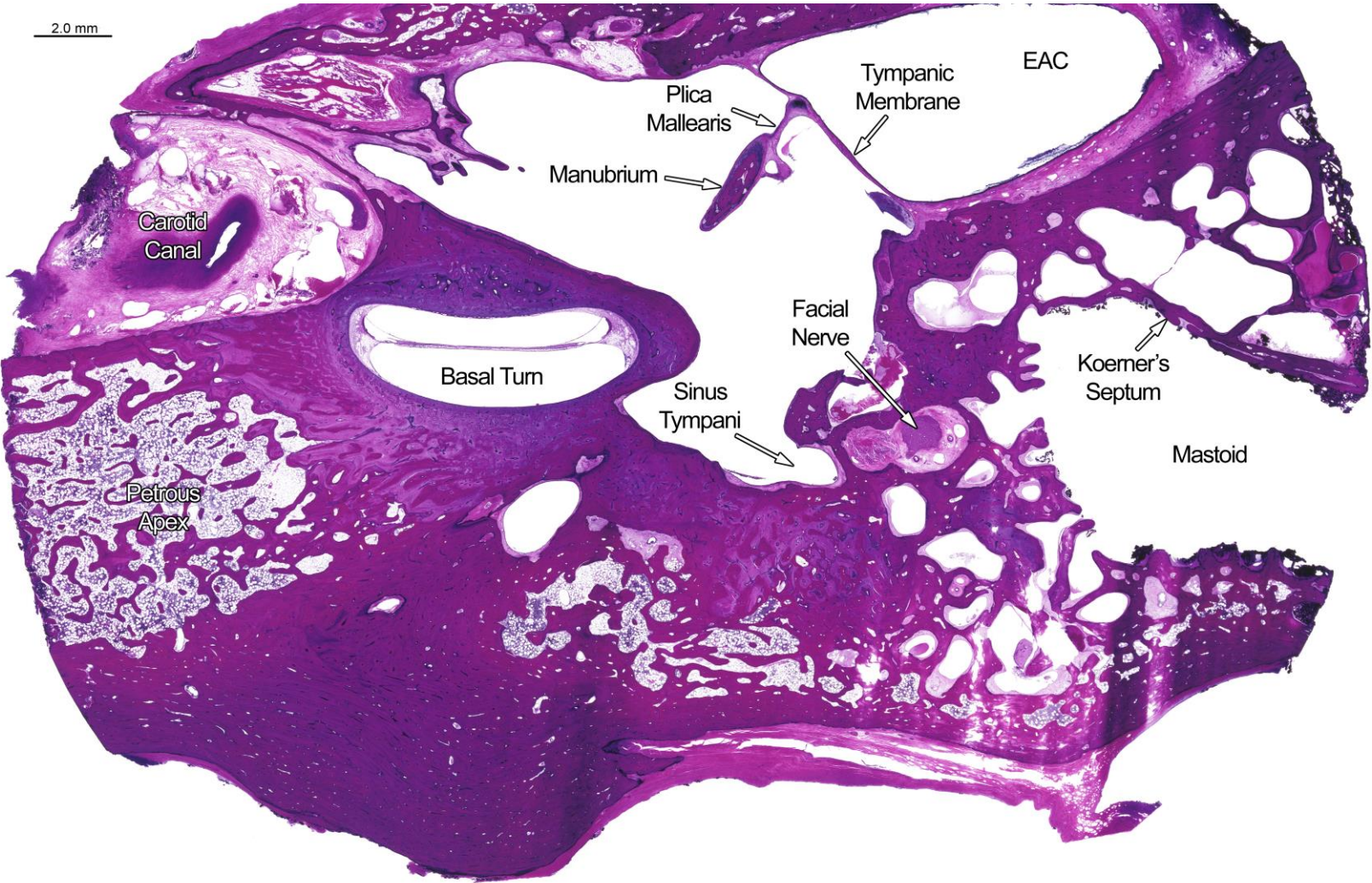
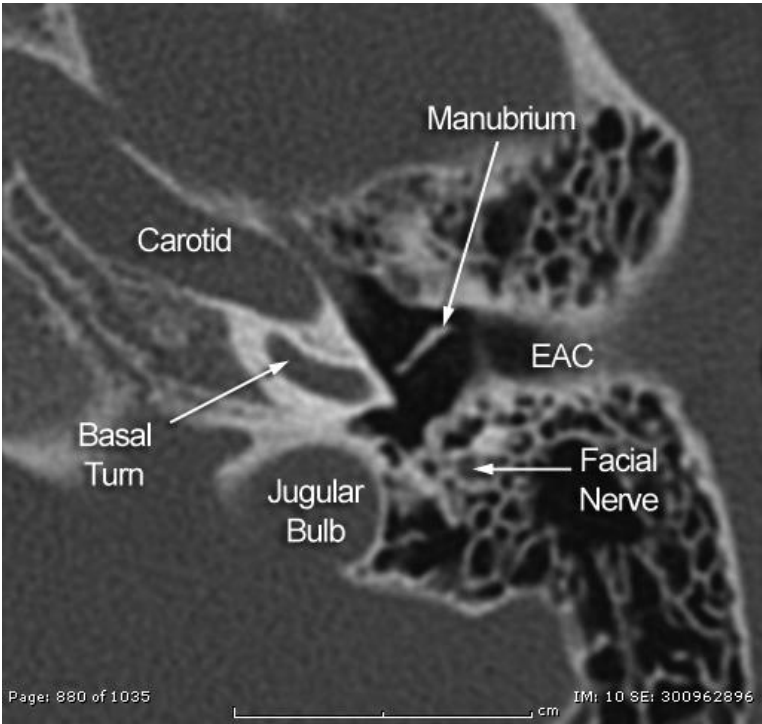
Section 451



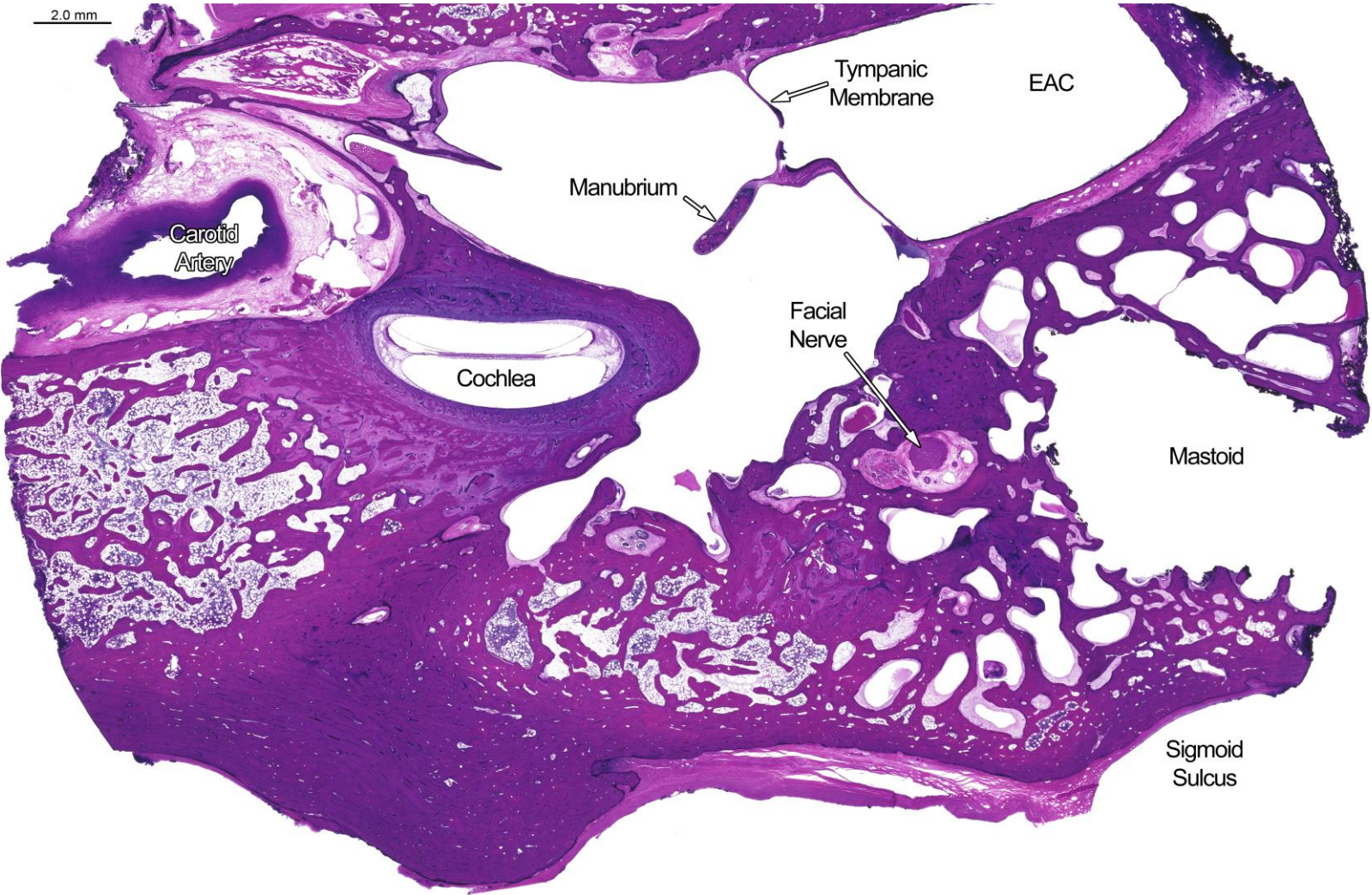
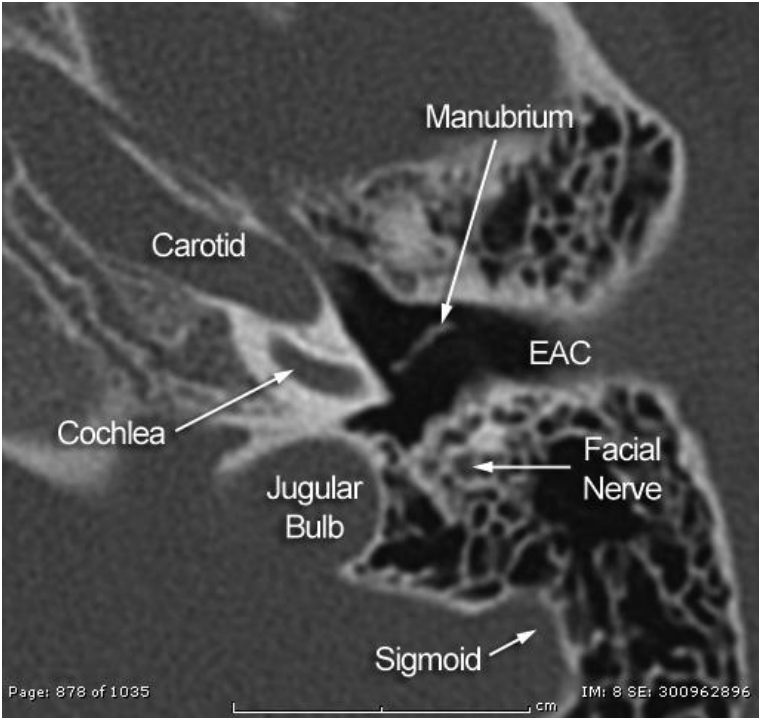
Section 471



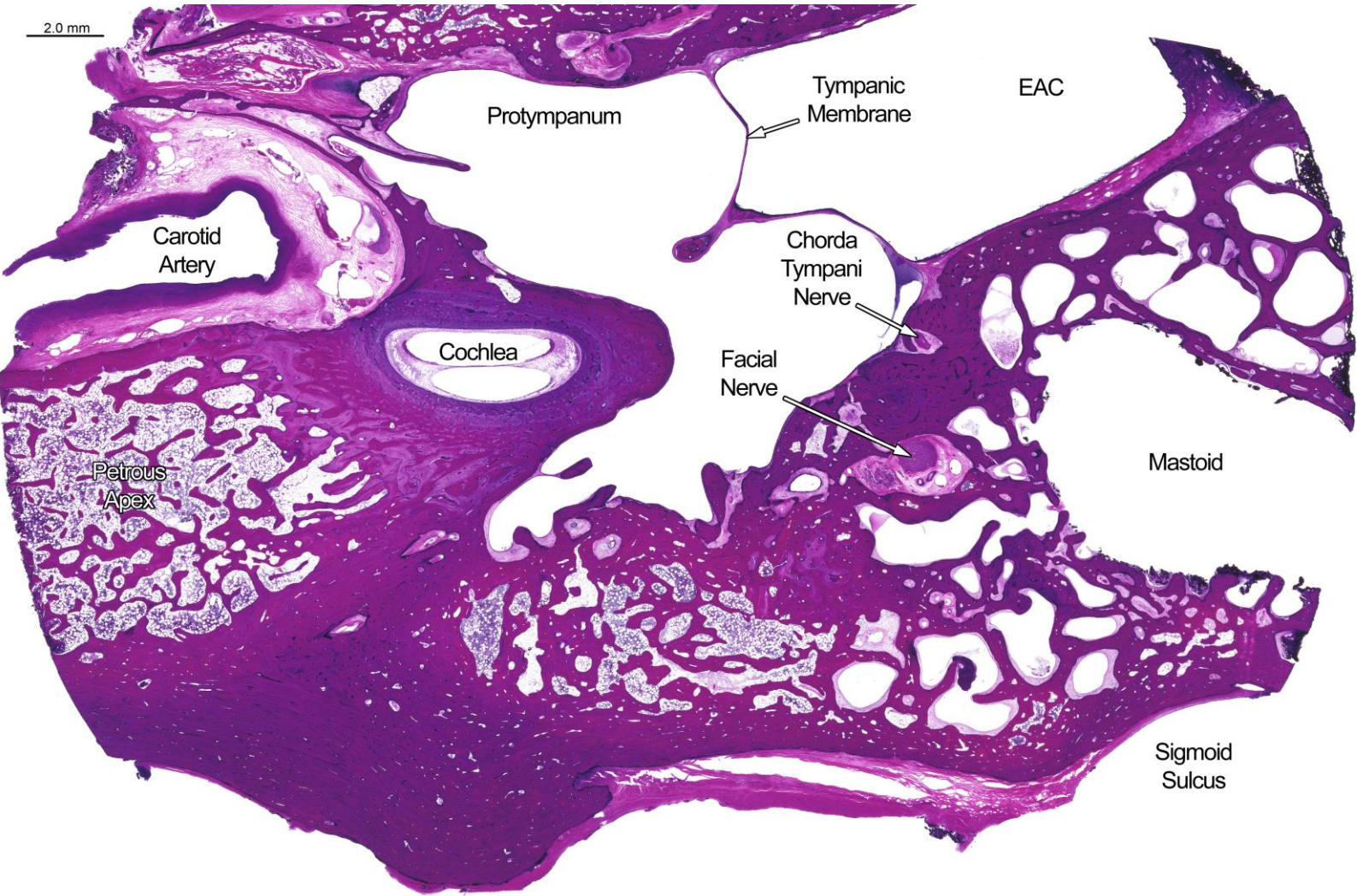
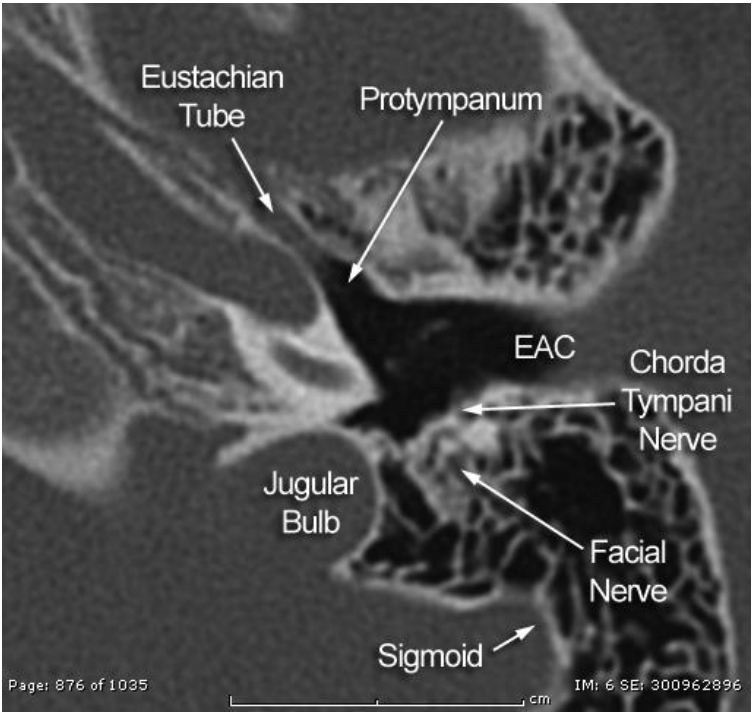
Section 491



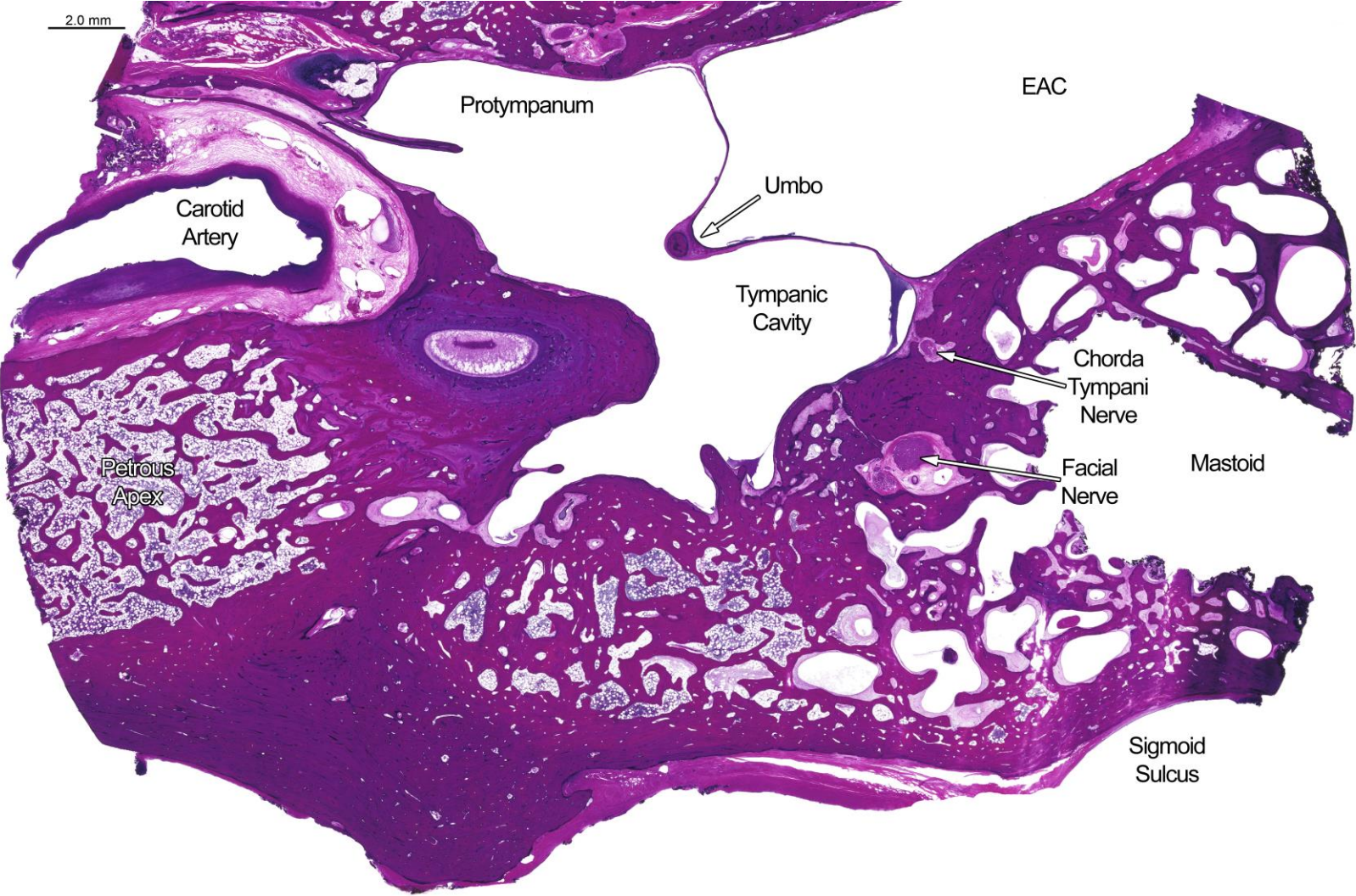
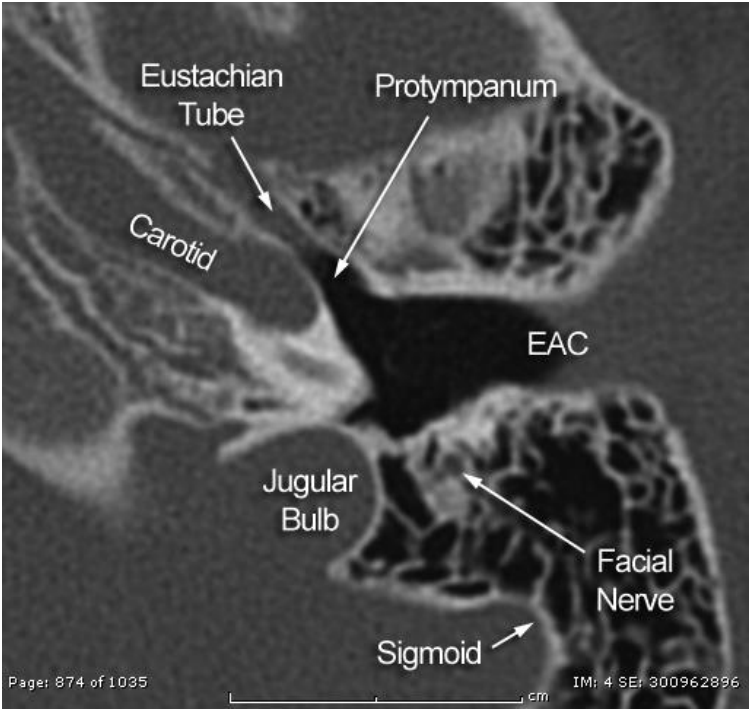
Section 511



Section 531



Section 551





Mass General Brigham

Mass Eye and Ear